

+34 695 577 651

LW
Estates

info@lw-estates.com

Villa in Ronda

Reference: R5417689



Bedrooms: 4

Bathrooms: 4

M²: 303

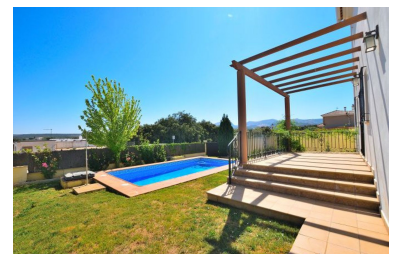
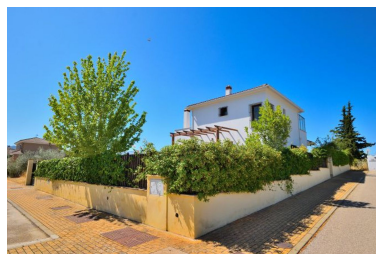
Price: 396,000 €

Status: Sale

Property Type: Villa

Parking places: by request

Printing day : 23rd June
2026





Overview: An oasis of tranquillity in a prime residential area. Discover this stunning detached house, offering a peaceful and tranquil setting, ideal for enjoying family life. Set on a 500 m² plot, this property boasts spacious gardens and a vegetable patch, perfect for nature lovers. The little ones can have fun in their charming two-storey wooden playhouse, whilst you relax by the large swimming pool surrounded by lawns. The house is spread over two floors, starting with a cosy ground floor comprising an entrance hall, a full bathroom and a large living room with a fireplace that opens onto the inner courtyard and a porch overlooking the swimming pool and garden – ideal for gatherings with family or friends. The fully equipped kitchen, with a utility room and direct access to the garden, is the perfect place to prepare delicious meals. It also features two bedrooms, one of which has an en-suite bathroom and access to the courtyard. On the first floor, you'll enjoy exceptional natural light thanks to the large windows. Here you'll find two further bedrooms, each with a terrace and a balcony overlooking the inner courtyard; one of them has a walk-in wardrobe and an aluminium-framed, glazed covered terrace. The house is fitted with an independent oil-fired underfloor heating system throughout and high-quality double-glazed windows, ensuring comfort and energy efficiency. The basement features a spacious garage for cars and storage, a water softener and a second solar water heater. It also includes a toilet and direct access to the house. With an alarm system for added security and an automatic door for access to the garage, this ■house ■combines ■comfort ■and security ■in ■a ■prime ■location. Don't miss ■the ■opportunity to ■make this wonderful ■home your ■own personal ■haven. The property's ■council ■tax ■is ■€623.10 ■per ■year.

Features:

Pool