

+34 695 577 651



info@lw-estates.com

Apartment in La Capellania

Reference: R5414470



Bedrooms: 3

Bathrooms: 2

M<sup>2</sup>: 59

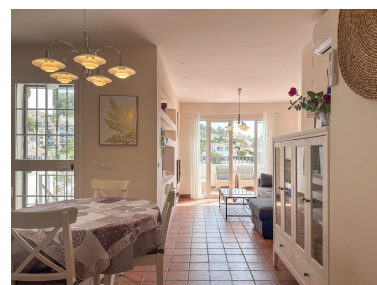
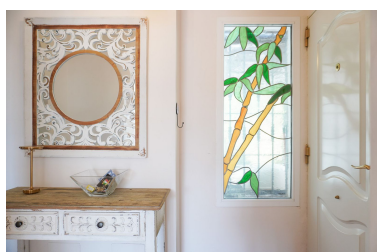
Price: 385,000 €

Status: Sale

Property Type: Apartment

Parking places: by request

Printing day : 25th June  
2026





---

Overview: Set within a small, well-kept community in the highly sought-after area of La Capellanía, this corner apartment enjoys an elevated position close to the sea, with open views over neighbouring villas, the mountains, and the Mediterranean. The main accommodation consists of two bedrooms, one bathroom, and an open-plan kitchen and living room flowing onto a lovely balcony, where the mountain and sea views make it the perfect spot for morning coffee. From the kitchen, outdoor stairs lead down to the guest apartment below. A separate front terrace wraps around the corner of the building, with a path leading down a gentle slope to the same guest apartment, which has its own bathroom and kitchenette. This makes the layout ideal for hosting family and friends, letting out the whole property as a holiday rental, or setting up a private home office. A tourist licence is already in place, making this an excellent option as both a holiday home and a rental investment. The community offers a swimming pool and green areas, along with a designated parking area ■for ■residents ■(note: ■this apartment ■does ■not ■come ■with an ■allocated ■parking space). A ■versatile, beautifully located ■property just ■a short ■drive from the ■beach, ■local ■amenities, ■and ■Málaga ■Airport.

---

Features:

None, Pool, Air conditioning, Sea views, Mountain views, None, Private garden, Resale