

+34 695 577 651

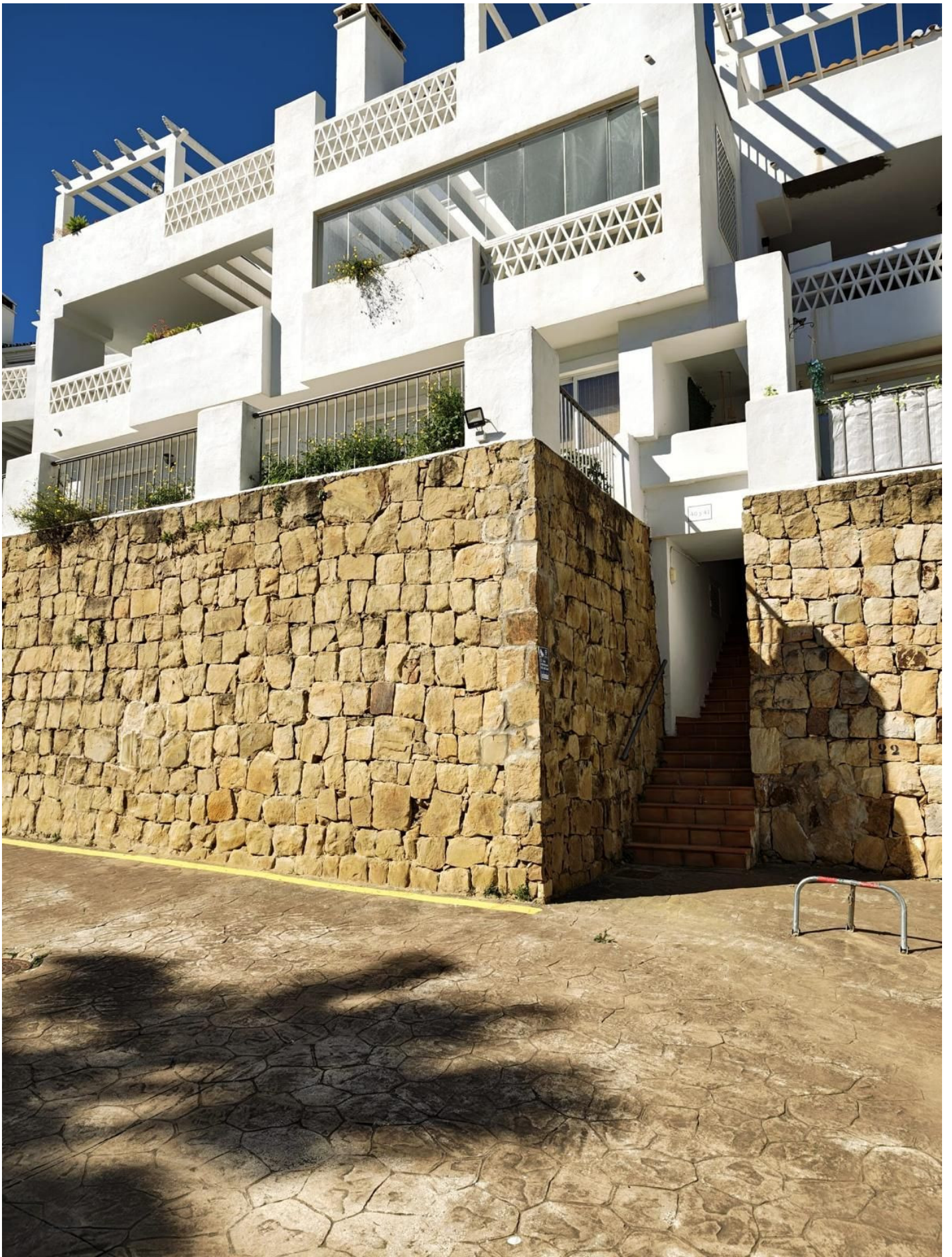


info@lw-estates.com

---

Terraced Townhouse in Manilva

Reference: R5394841



Bedrooms: 2

Status: Sale

Bathrooms: 2

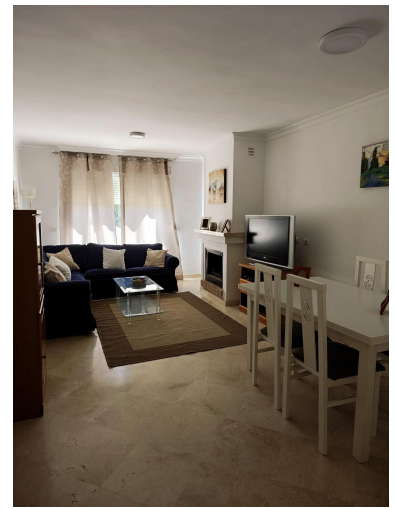
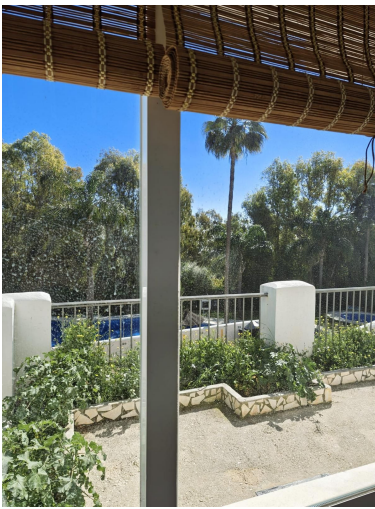
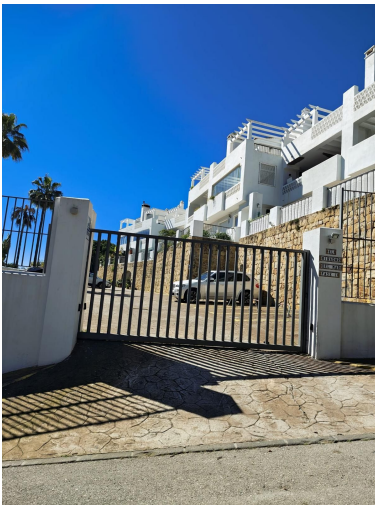
Property Type: Terraced  
Townhouse

M<sup>2</sup>: 94

Parking places: by request

Price: 315,000 €

Printing day : 10th June  
2026



---

Overview:94-square-meter apartment with two bedrooms and two bathrooms, featuring a 48.20-square-meter terrace and a community pool—an opportunity for residents.

---

Features:

None, Pool