

+34 695 577 651



info@lw-estates.com

Terraced Townhouse in San Pedro de Alcántara

Reference: R5378353



Bedrooms: 2

Bathrooms: 1

M²: 136

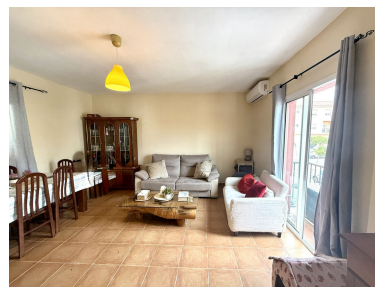
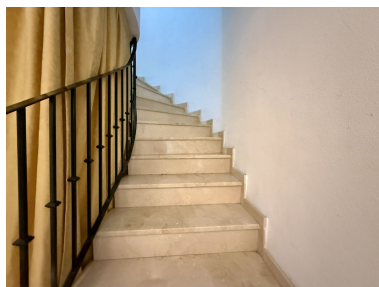
Price: 375,000 €

Status: Sale

Property Type: Terraced
Townhouse

Parking places: by request

Printing day : 20th June
2026





Overview: Spacious two bedroom home with huge sea view solarium, San Pedro Alcantara (north) in the area of Fuentenueva. Set in a very central, family-friendly spot on the growing north side of San Pedro town, this is a genuinely spacious property with a layout that feels different to most. It is bright, with views of greenery and trees from every angle, and offers excellent potential to modernise and reconfigure however it is perfectly liveable in its current condition. You enter into a generous lobby area that works perfectly as a home office or reading space, with excellent built-in storage. From here there is direct internal access via stairs down to the underground parking space, and a curved staircase up to the main living area, giving the home a practical, townhouse-style flow. Upstairs, the living room is particularly luminous thanks to both patio doors and windows bringing in light throughout the day. There is air conditioning with hot and cold air in this room. The kitchen which is fully fitted with integrated appliances, also benefits from natural light and has a window and a glazed door leading to a covered laundry area. From the laundry area, stairs take you up to a huge roof terrace solarium with sea views. This is a real blank canvas and could be transformed into an exceptional outdoor living space with dining, lounge and entertaining zone. We have provided a render for you to visualise what this area could become with some imagination. The property currently offers two bedrooms and one bathroom. The master bedroom is notably large and features dual patio doors on both sides of the room, adding to the sense of space and light. With the overall size and layout, the property could easily be reconfigured to create three bedrooms and/or certainly two bathrooms, subject to the usual permissions and design. The location is a major highlight: Supera Sports Club is on the same street and offers resident family discounts, with indoor and outdoor pools, gym, padel, climbing and more. Shops are on the doorstep, and schools are directly opposite, making this a strong option for families who want convenience without giving up space. Thanks to this property not having communal gardens and pool areas, the community fee is a mere 26€ per month!!! Properties rarely come to market in this immediate area, and certainly not at this price point. We have also created visual ■concept ■images ■to ■show what ■the ■home ■could ■look like ■with ■a little ■investment, helping you ■see the ■potential from ■day one. Tourist ■rentals ■are ■allowed ■in ■this ■development!

Features:

None, Air conditioning, Heating, Sea views, Mountain views, None, Parking, Investment, Resale