

+34 695 577 651



info@lw-estates.com

Apartment in Benalmadena Pueblo

Reference: R5368801

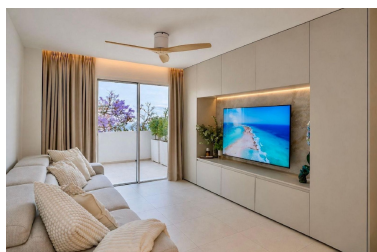


Bedrooms: 3
Status: Sale

Bathrooms: 2
Property Type: Apartment

M²: 111
Parking places: by request

Price: 549,000 €
Printing day : 7th May 2026





Overview: **FULLY RENOVATED CORNER APARTMENT** with SEA VIEWS in Benalmádena Pueblo Discover this fantastic corner property, completely refurbished using top-quality materials and featuring a modern, functional design, ready to move into. Located in one of the most sought-after areas of Benalmádena Pueblo, it perfectly combines tranquillity, comfort, and proximity to all amenities. ***Prime location*** Just 500 metres from the village centre, with bars, restaurants and shops only a short walk away. In addition, a fully equipped sports centre with gym, swimming pool and football pitches is just 200 metres away. ***Outdoor spaces to enjoy*** The property boasts a pleasant main terrace of 9 m², south-east facing, offering views of the sea and mountains. There is also a second covered terrace (8 m²), accessed from one of the bedrooms, currently used as a leisure area. ***Quality and comfort*** Fully refurbished, the apartment offers: -Ducted air conditioning throughout -Fitted wardrobes -Excellent layout and natural light -Modern design -Open-plan kitchen with island -En-suite bathroom ***INCLUDES PRIVATE GARAGE*** Underground garage included in the price. ***Communal areas*** The residential complex features a communal swimming pool and well-maintained gardens, ideal for relaxing and enjoying the Costa del Sol's climate. ***Layout*** Entrance hall, bathroom, kitchen and a spacious living-dining room with access to the main terrace. From the living room, a hallway leads to bedroom 2, bedroom 3 with a private terrace and the master bedroom with en-suite bathroom. ***Key details*** Built size: 111 m² Terraces: 9 m² + 8 m² Floor: 1st (building with only 2 floors) Orientation: South-east Year of construction: 2004 Rubbish tax: €172/year ***Distances*** -School: 20 m -Restaurants and bars: 100 m -Bus stop: 200 m -Sports centre: 200 m -Benalmádena Pueblo centre: 500 m -Airport: 15.2 km

Features:

Pool, Air conditioning, Sea views, Mountain views, Lift, None, Private garden, Parking, Holiday Home, Luxury