

+34 695 577 651

LW
Estates

info@lw-estates.com

Land in Coín

Reference: R5365906

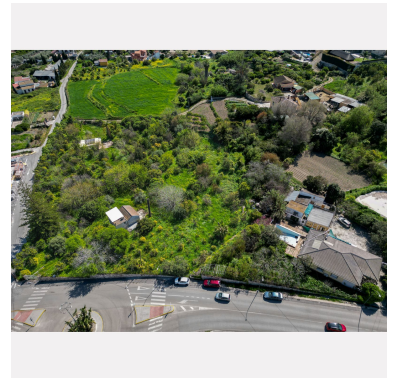
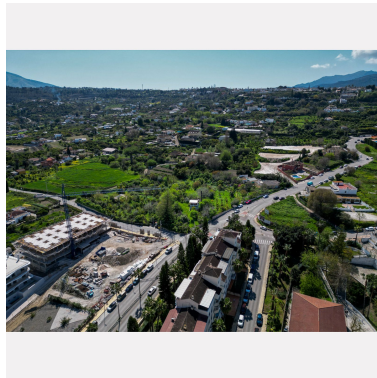
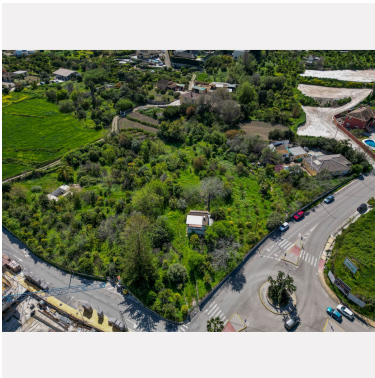
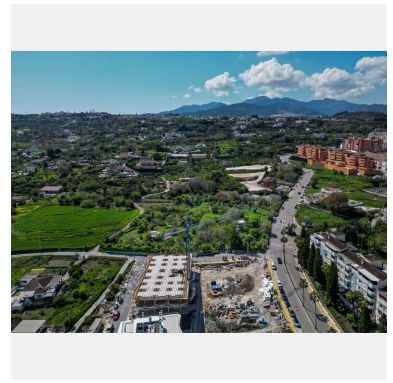
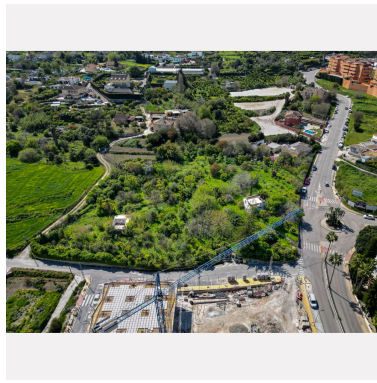


Bedrooms: by request
Status: Sale

Bathrooms: by request
Property Type: Land

M²: 7,500
Parking places: by request

Price: 3,600,000 €
Printing day : 13th May 2026



Overview: Building Plot in Coín – Málaga Land from the sector classified by the P.G.O.U. of Coín as Programmed Developable Land SUP-R.11, located in the urban expansion area, on the left side of the street known as the old Coín–Mijas ring road, in the Huertas Viejas area. A unique investment opportunity in a 7,500 m² developable plot, located in the heart of the urban area of Coín (Málaga), in an unbeatable location. Surrounded by all services: Mercadona, shops, schools, restaurants, bars and public transport. An exceptional added value for any residential development or real estate project. Surface area: 7,500 m² Developable land Consolidated area with high demand Ideal for residential development or long-term investment An exceptional opportunity in one of the best areas of Coín, where location, views and accessibility come together to offer a project with great potential. Contact us with no obligation for more information and urban planning details.

Features:

None