

+34 695 577 651

LW
Estates

info@lw-estates.com

Apartment in Benalmadena Pueblo

Reference: R5361490



Bedrooms: 2

Bathrooms: 2

M²: 93

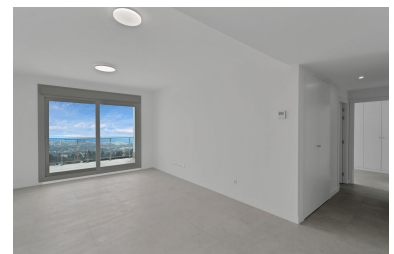
Price: 449,000 €

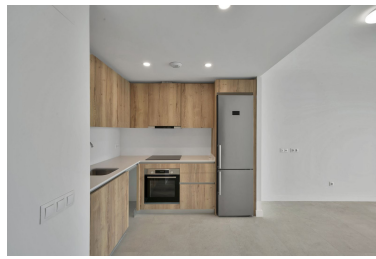
Status: Sale

Property Type: Apartment

Parking places: by request

Printing day : 27th April
2026





Overview: Discover your new home in the heart of the Costa del Sol! This stunning, brand-new apartment boasts 2 spacious bedrooms and 2 modern bathrooms, designed for comfort and style. It's undeniable highlight is the terrace with breathtaking sea views, perfect for enjoying relaxing moments outdoors. - 93m² built area. - 23m² built area of ■■the terrace. - 69m² usable area. The property has been customized with many extras, including a premium kitchen, top-of-the-line appliances, fully tiled bathrooms with shower enclosures, electric blinds, and more. The total value is over €10,000. Located in the exclusive Residencial Blossom II, just steps away from the charming Benalmádena Pueblo, this home combines the tranquility of a privileged setting with proximity to all amenities. The fully gated complex ensures security and privacy with surveillance cameras and concierge service. Plus, you'll have access to top-notch facilities: a refreshing community pool, a fully equipped gym, and a sophisticated gastroteca for sharing special moments with family and friends. Experience a modern, elegant, and Mediterranean lifestyle in this apartment that has it all!

Features:

New development, Pool, Air conditioning, Heating, Sea views, Mountain views, Lift, None, Private garden, Parking