

+34 695 577 651

**LW**  
Estates

info@lw-estates.com

Land in San Martín de Tesorillo

Reference: R5356729

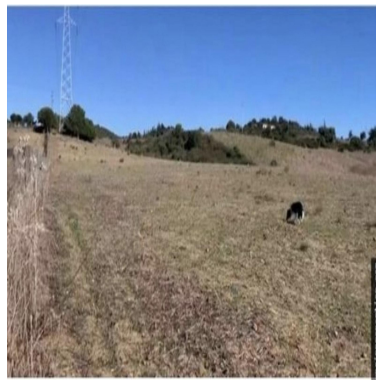


Bedrooms: by request  
Status: Sale

Bathrooms: by request  
Property Type: Land

M<sup>2</sup>: 70,000  
Parking places: by request

Price: 630,000 €  
Printing day : 2nd May 2026



---

Overview: Rustic land for sale with electricity and water – Prime location A rustic plot of land is offered by the roadside, with access to electricity and water, located in a strategic, highly desirable, and easily accessible area. The plot is in an excellent location: next to the Hotel Monasterio, just 2 km from the Dos Lunas polo field, 2 km from the charming village of San Martín del Tesorillo, and a mere 2 minutes from the entrance to the Sotogrande Marina. The land offers a peaceful and natural setting, ideal for recreational, agricultural, or equestrian use. Horses are currently present, demonstrating its suitability for this type of activity. Should the future owner already have horses, the property can continue to be used for equestrian purposes without any issues. A perfect opportunity for those seeking a versatile, well-located space with multiple possibilities in a privileged setting.

---

Features:

Mountain views