

+34 695 577 651

LW
Estates

info@lw-estates.com

Penthouse in Monte Sancha

Reference: R5355220

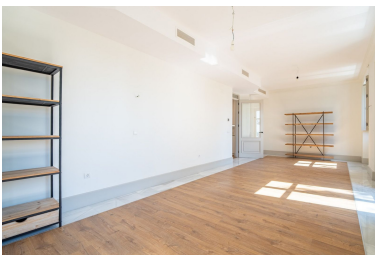


Bedrooms: 3
Status: Sale

Bathrooms: 3
Property Type: Penthouse

M²: 281
Parking places: by request

Price: 2,050,000 €
Printing day : 3rd May 2026





Overview: Exclusive luxury duplex in a historic mansion on Paseo de Sancha Discover a truly unique property in Málaga: a spectacular luxury duplex, completely refurbished, located in a majestic early 20th-century mansion designed by the renowned architect Fernando Guerrero Strachan. Situated on the prestigious Paseo de Sancha, just 50 metres from the beach, this home masterfully combines the architectural charm of its era with top-quality modern finishes. The property is distributed over two floors and offers three spacious bedrooms, each with its own en-suite bathroom, ensuring privacy and comfort. It features a series of carefully selected details that enhance its exclusive character: restored original mouldings, high ceilings, fine carpentry, and contemporary elements that provide sophistication and functionality. The jewel of the home is its panoramic terrace, a truly unique space to enjoy the stunning sea views, Mediterranean breeze, and the natural light that defines this privileged area of Málaga. A singular home that seamlessly blends history, design, and an exceptional location.

Features:

Beachfront, Air conditioning, Sea views, Mountain views, Lift, None, Parking, Luxury