

+34 695 577 651

LW
Estates

info@lw-estates.com

Apartment in Manilva

Reference: R5336410



Bedrooms: 2

Bathrooms: 2

M²: 152

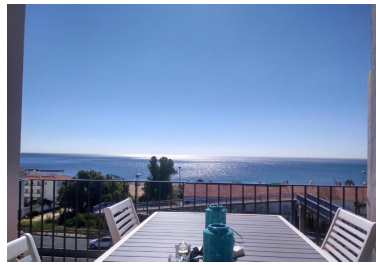
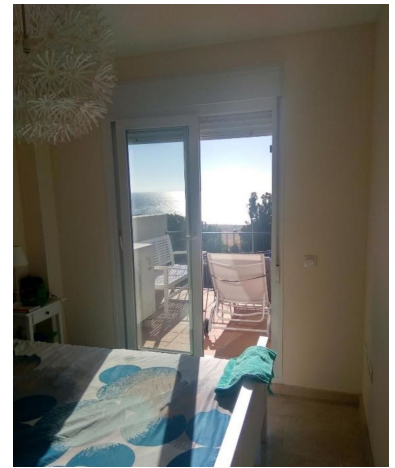
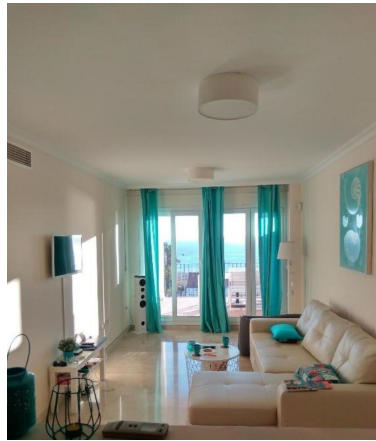
Price: 275,000 €

Status: Sale

Property Type: Apartment

Parking places: by request

Printing day : 2nd May 2026



Overview: This beautiful two bedroom and two bathroom apartment is located in the much sought after area of Manilva Playa, within just a short walk to the beautiful beaches. South facing apartment which boasts stunning views towards the sea and surrounding mountains. Lush tropical gardens, swimming pool and tennis court are also included within this secure gated community. This cosy apartment features two bedrooms, two bathrooms, fully fitted kitchen and a living room leading onto its private terrace with glass curtains from where you can enjoy its spectacular sea views. La Duquesa marina with its vast array of amenities and restaurants is just a 10 minute walk from the property, while La Duquesa Golf is just 2km away. Well located within just a 10 minute drive to Estepona town centre and within easy reach of Gibraltar airport. Ideal property for permanent living or as an investment for holiday rentals.

Features:

Pool, Heating, Sea views, Mountain views, Lift, None, Private garden, Parking, Holiday Home, Investment