

+34 695 577 651



info@lw-estates.com

Apartment in Guadalmina Alta

Reference: R5264044



Bedrooms: 2

Bathrooms: 2

M²: 126

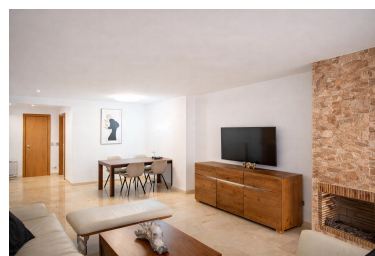
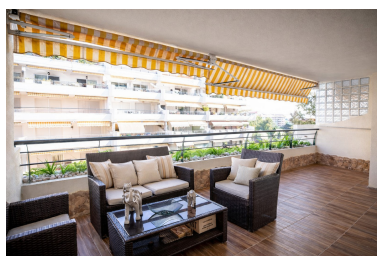
Price: 450,000 €

Status: Sale

Property Type: Apartment

Parking places: by request

Printing day : 14th June
2026





Overview: Situated within one of Guadalmina's most prestigious gated communities, this refined frontline golf apartment offers an exceptional lifestyle surrounded by landscaped gardens, privacy and top-class communal facilities. An excellent option as a permanent residence, holiday home or high-quality investment on the Costa del Sol. The property features a spacious and light-filled living and dining area, designed to maximise comfort and natural light throughout the day. From here, large glass doors open onto a private terrace with open views over the gardens, swimming pool and the golf course, creating an ideal space for outdoor living and relaxation in every season. The apartment comprises two generously sized bedrooms, both fitted with built-in wardrobes. The master bedroom enjoys direct access to the terrace, enhancing the sense of space and connection with the surrounding greenery. There are two fully fitted bathrooms, finished in a contemporary and practical style. The independent kitchen is fully equipped with appliances in excellent condition, offering a functional and well-organised space suitable for everyday living or extended stays. Residents benefit from a secure and impeccably maintained residential complex, featuring 24-hour security, extensive landscaped gardens and an impressive selection of seven communal swimming pools. The apartment is fitted with central air conditioning and heating, providing year-round comfort. A private parking space is included in the price. This is a rare opportunity to acquire a frontline golf property in one of Marbella's most established and desirable areas, just a short drive from San Pedro de Alcántara, the beaches and all essential services.

Features:

Pool, Air conditioning, Mountain views, Private garden, Lift, Parking