

+34 695 577 651

LW
Estates

info@lw-estates.com

Apartment in Calahonda

Reference: R5216278



Bedrooms: 2

Bathrooms: 2

M²: 100

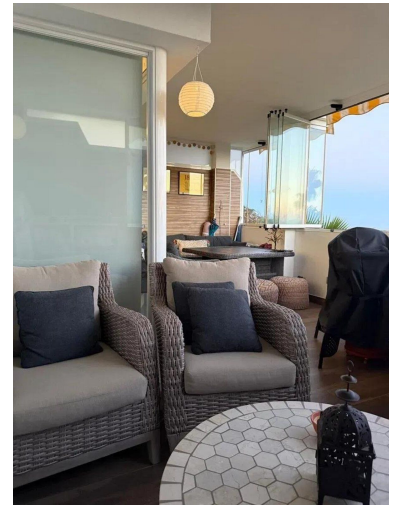
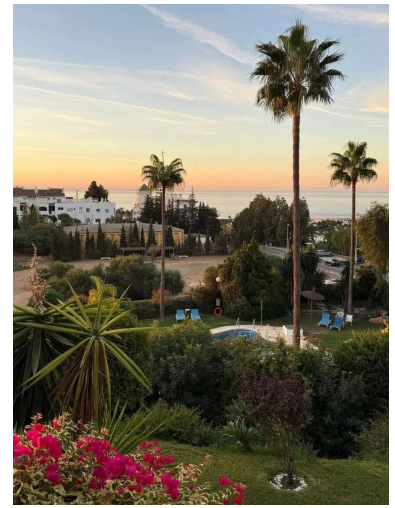
Price: 399,000 €

Status: Sale

Property Type: Apartment

Parking places: by request

Printing day : 16th
December 2025



Overview:Modern apartment with panoramic sea views in Calahonda We present a tastefully renovated property located in one of the most attractive and well-maintained communities in Calahonda. An ideal place for those seeking peace, comfort, and a direct connection to the Mediterranean environment. The apartment offers two spacious bedrooms and two bathrooms, one of which is en suite within the master bedroom, where an elegant glass enclosure provides spaciousness and brightness. The living room, with its warm and relaxed atmosphere, extends onto a large terrace from which you can enjoy spectacular views of the sea and the pool area. The terrace has been fitted with a Lumon system and awnings, allowing it to be used in both summer and winter. The living room and master bedroom have direct access to this outdoor space, perfect for enjoying an al fresco meal or simply gazing at the horizon. The residential complex stands out for its well-kept gardens, two large swimming pools, and peaceful surroundings, with impeccable communal areas and parking for residents. An added bonus is that the land in front of the building is not buildable, so the open sea views will always be protected. In short, a modern, bright home in an exceptional location, designed to fully enjoy the coastal lifestyle.

Features:

Pool, Air conditioning, Sea views, Mountain views, None, Private garden, Parking