

+34 695 577 651



info@lw-estates.com

Apartment in Puerto Banús

Reference: R5214580



Bedrooms: 2

Bathrooms: 2

M²: 140

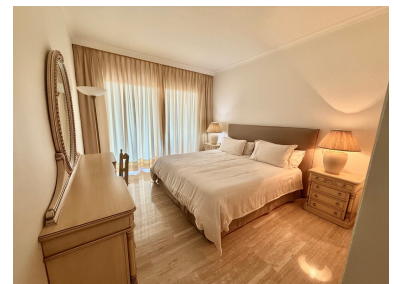
Price: 790,000 €

Status: Sale

Property Type: Apartment

Parking places: by request

Printing day : 27th
December 2025





Overview: This exclusive apartment is located in the sought-after residential complex El Embrujo Marbella, just a few steps from Puerto Banús and the beaches of Marbella. The property impresses with its excellent location. With a generous living area of 140 m² and a private terrace of 25 m², this apartment offers the highest level of comfort and quality of life. The apartment features two spacious bedrooms and two modern bathrooms. The amenities include a fully equipped kitchen, a practical utility room, and built-in wardrobes that provide ample storage space. Air conditioning ensures pleasant temperatures throughout the year, while the elevator facilitates access to the apartment. A private garage parking space is also available, offering additional security and convenience. The residential complex offers numerous communal facilities, including a well-maintained garden and a large communal pool, inviting you to relax and enjoy. The complex is guarded around the clock and features a 24-hour security service as well as a 24-hour concierge service. The gated community ensures maximum privacy and security. From your own terrace, you can enjoy a wonderful view of the garden and the pool.

Features:

None, Pool, Air conditioning, Private garden, Lift, None, 24H Security, Parking, Luxury