

+34 695 577 651

LW
Estates

info@lw-estates.com

Apartment in Puerto Banús

Reference: R5212948



Bedrooms: 2

Bathrooms: 1

M²: 70

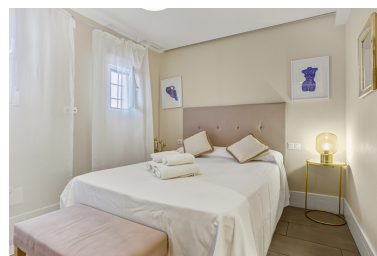
Price: 635,000 €

Status: Sale

Property Type: Apartment

Parking places: by request

Printing day : 23rd
December 2025





Overview: Beautiful beachfront apartment with sea and La Concha mountain views, located in a gated community in the heart of Puerto Banús. Just a few steps from the beach, restaurants, shops, and all amenities. This bright and welcoming property offers an unbeatable location and the perfect combination of comfort and lifestyle. The apartment features two bedrooms and one fully equipped bathroom, as well as a modern kitchen and a spacious living-dining area filled with natural light. The interior has been designed for both functionality and comfort, and includes centralized air conditioning, shutters, and a pleasant, airy atmosphere. The gated community provides a secure and peaceful environment, ideal for both permanent residence and holiday stays. Additionally, the property offers the possibility of short-term rentals, making it an excellent investment opportunity. An exceptional opportunity to acquire a property in one of Marbella's most exclusive areas, combining stunning sea and mountain views with a truly privileged location. Transferable Touristic license already in place for this property - This is a fantastic investment opportunity.

Features:

Beachfront, None, Air conditioning, Sea views, Mountain views, None