

+34 695 577 651

LW
Estates

info@lw-estates.com

Apartment in Nueva Andalucía

Reference: R5212300



Bedrooms: 2

Bathrooms: 2

M²: 95

Price: 440,000 €

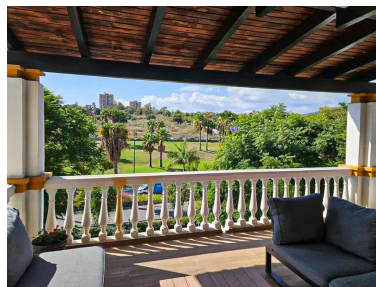
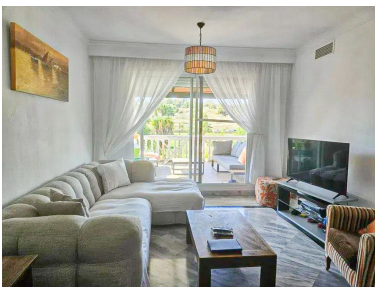
Status: Sale

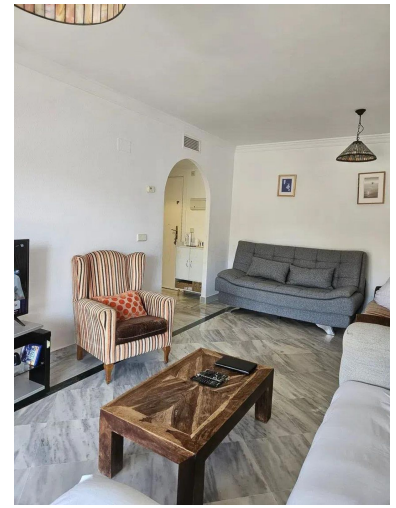
Property Type: Apartment

Parking places: by request

Printing day : 26th

December 2025





Overview: Charming two-bedroom apartment located in a sought-after residential complex just minutes from Puerto Banús, one of the most exclusive areas of Marbella. The property offers a functional layout with two bedrooms, two full bathrooms, a separate kitchen, and a spacious living-dining room with direct access to a generous west-facing terrace, perfect for enjoying the afternoon sun and unobstructed views. The residential environment stands out for its large garden areas, family atmosphere, and excellent facilities: paddle tennis court, playground, and 24-hour security service. Its location is ideal for those seeking tranquility without sacrificing proximity to the beach, restaurants, and leisure areas of Banús. The apartment comes with a parking space and storage room in the underground garage, providing convenience and functionality for everyday life.

Features:

Pool, Air conditioning, Lift, None, Private garden, Parking, Investment