

+34 695 577 651

LW
Estates

info@lw-estates.com

Apartment in Sotogrande Puerto

Reference: R5204665



Bedrooms: 3

Bathrooms: 2

M²: 138

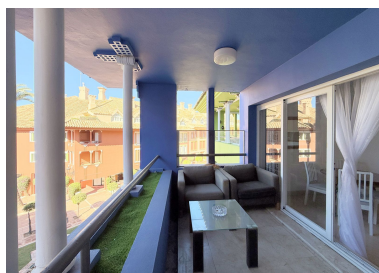
Price: 375,000 €

Status: Sale

Property Type: Apartment

Parking places: by request

Printing day : 26th
December 2025





Overview:CHARMING APARTMENT WITH VIEWS OF THE SOTOGRANDE MARINA. Privileged location in the heart of Sotogrande Marina, surrounded by exclusive restaurants, elegant boutiques, and a lively leisure area. This bright southwest-facing property features two spacious bedrooms and two bathrooms, one of them en suite, as well as a generous living room with an open-plan kitchen that provides a sense of space and modern style. From its cozy terrace, you can enjoy beautiful views of the marina, creating a relaxed and sophisticated atmosphere. Its excellent layout, abundant natural light, and peaceful surroundings make it an ideal choice both as a permanent residence and as a holiday home. A magnificent investment opportunity with great rental potential in one of the most exclusive areas of the Costa del Sol.

Features:

None, Air conditioning, Heating, Private garden, Lift, None, Parking, Holiday Home, Investment, Resale