

+34 695 577 651



[info@lw-estates.com](mailto:info@lw-estates.com)

---

Commercial in Guadalmina Baja

Reference: R5203009



Bedrooms: 2

Bathrooms: 1

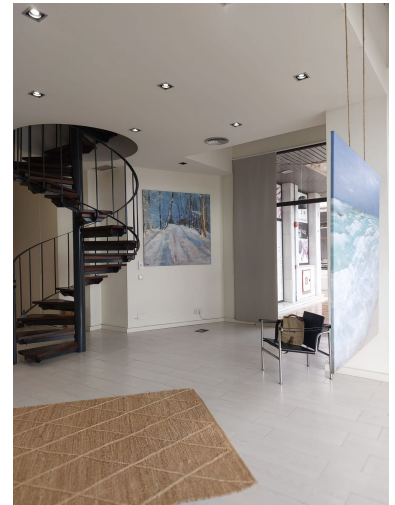
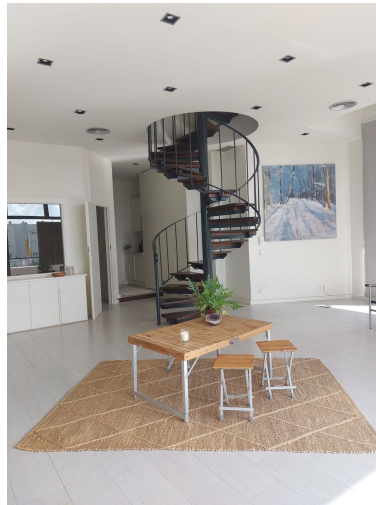
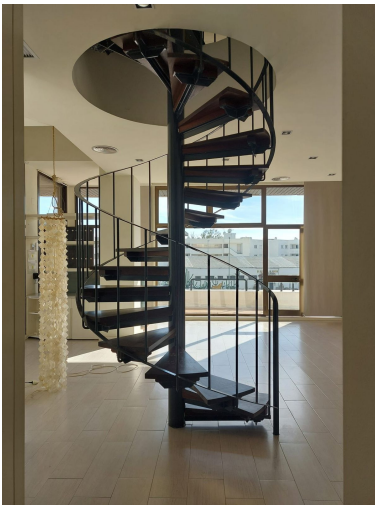
M<sup>2</sup>: 108

Price: 520,000 €

Status: Sale

Property Type: Commercial Parking places: by request

Printing day : 1st January  
2026




---

Overview: Located in the heart of Guadalmina's bustling commercial centre, this attractive premises enjoys excellent visibility, facing directly onto the highway, ensuring maximum exposure for any type of business. Distributed across two floors, the property was previously used as an art gallery, making it ideal for a wide range of commercial activities such as an office, showroom, studio, or boutique business. The interior is bright, modern, and sunny, featuring two spacious rooms, one bathroom, and a built-in kitchen, offering both comfort and functionality. Large windows flood the space with natural light, creating a welcoming and inspiring environment. Additional features include a fully installed alarm system for enhanced security and ample street parking directly outside the building for clients and staff. Situated on the first floor, the premises benefit from easy access, a well-maintained environment, and proximity to other established businesses, restaurants, and essential services in Guadalmina. This is an excellent opportunity to acquire a versatile, ready-to-use commercial property in one of Marbella's most desirable and visible commercial locations — perfect for professionals, entrepreneurs, or investors seeking a high-exposure and contemporary business space.

---

#### Features:

None, Air conditioning, Heating, Lift, Alarm system, Parking, Investment, Resale