

+34 695 577 651

LW
Estates

info@lw-estates.com

Terraced Townhouse in Nueva Andalucía

Reference: R5194195



Bedrooms: 3

Bathrooms: 3

M²: 151

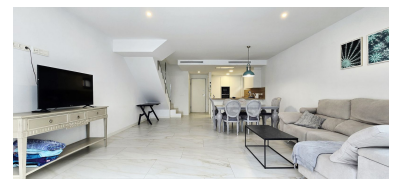
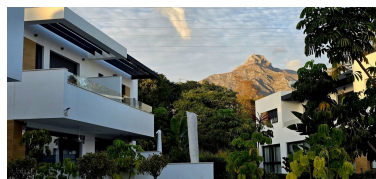
Price: 750,000 €

Status: Sale

Property Type: Terraced
Townhouse

Parking places: by request

Printing day : 16th
December 2025



Overview:Marbella – Nueva Andalucía Modern Semi-Detached Townhouse near Puerto Banús and Aloha College

Located in a recently built gated community, this elegant semi-detached townhouse offers the perfect blend of modern design, comfort, and convenience. Situated just 1.5 km from the world-famous Puerto Banús and within close proximity to Aloha College, golf courses, supermarkets, restaurants, and sports facilities, this home enjoys one of the most sought-after locations in Marbella. Built in 2020, the property forms part of a stylish development of contemporary townhouses featuring clean architectural lines and exquisite design. Each home has been carefully designed to offer both functionality and sophistication, using top-quality materials and high standards throughout. The townhouse comprises 3 bedrooms, 2 bathrooms, and a guest toilet, as well as a private terrace and garden or patio area. The interiors feature a spacious living room, fully equipped designer kitchen, porcelain floors (120x60), independent air conditioning, and pre-installation for home automation. A private garage space for one car is included in the price. This is a perfect opportunity to own a contemporary home in one of Marbella's most desirable areas — combining exclusivity, comfort, and proximity to all amenities.

Features:

Pool, Air conditioning, Heating, Private garden, Lift, None, Parking, Holiday Home, Investment, Luxury