

+34 695 577 651

LW
Estates

info@lw-estates.com

Penthouse in Benalmadena Pueblo

Reference: R5162749



Bedrooms: 2

Bathrooms: 1

M²: 52

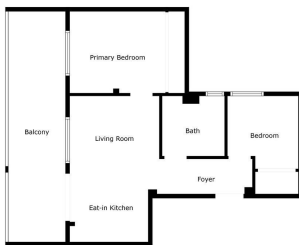
Price: 339,000 €

Status: Sale

Property Type: Penthouse

Parking places: by request

Printing day : 26th June
2026





Overview: Discover a rare opportunity to own a charming penthouse in the heart of picturesque Benalmádena Pueblo — complete with panoramic Mediterranean views and an underground parking space. The true highlight of this home is the sun-drenched south-facing terrace (18 m²), offering open sea and rooftop views across the whitewashed village. A perfect setting for morning coffee, sunset dinners, and year-round outdoor living. Inside, the apartment is thoughtfully designed to maximise space and light. •Bright living area with open-plan kitchen •Two bedrooms, including a main bedroom with sea views •Modern bathroom with jacuzzi •Air conditioning throughout The building includes a lift and secure underground parking — a highly valued feature in the historic village centre. Located just a short stroll from cafés, restaurants, shops, and local amenities, this penthouse offers authentic Andalusian charm while remaining well connected to the coast, beaches, golf courses and Málaga Airport. Whether as a refined holiday retreat, investment property, or permanent residence, this is a home that combines location, views and lifestyle in one unique package.

Features:

Air conditioning, Sea views, Mountain views, Lift, None, Alarm system, Parking