

+34 695 577 651

LW
Estates

info@lw-estates.com

Penthouse in Nueva Andalucía

Reference: R5158996



Bedrooms: 3

Bathrooms: 3

M²: 249

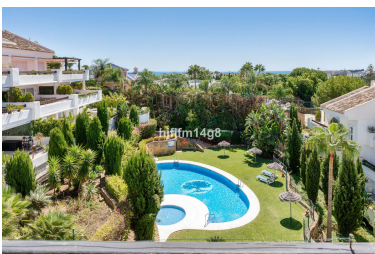
Price: 945,000 €

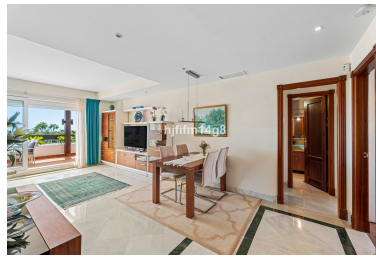
Status: Sale

Property Type: Penthouse

Parking places: by request

Printing day : 17th
September 2025





Overview: Welcome to what we believe is the best penthouse in Aloha Mirasierra, offering a rare combination of privacy, space, views, and unbeatable location. Nestled in a peaceful yet central setting, this home is within walking distance of everything you need – restaurants, bars, supermarkets, banks, golf courses, and nature trails are all just a short stroll away. **Property layout:** Step into a home that truly has it all. This bright and beautifully laid-out duplex penthouse welcomes you with a spacious entrance hall. To the right, a staircase leads to the top floor, while discreet and practical storage space is cleverly tucked beneath. **Main Floor:** - Modern kitchen (refurbished in 2013) with direct access to a north-facing terrace, offering open views towards the iconic La Concha Mountain, and across to the Las Brisas valley, mountains, and golf course. - Additional storage space on the terrace – ideal for tools and garden supplies. - Open-plan dining and living area, leading onto the main south-facing terrace – totally private, sun-drenched, and boasting stunning panoramic views of the valley, complex, and the sea. - One double bedroom with direct access to the terrace. - Guest bathroom with shower. **Top Floor:** - Two double bedrooms, both featuring charming high ceilings with exposed beams. - Originally, there was only one bathroom upstairs; this was renovated in 2013, at which time an additional bathroom was added to the master bedroom. - The guest bedroom is generous in size, with ample wardrobes and access to its own private south-facing terrace, as well as a full bathroom located in the hallway. - The master suite includes an en-suite bathroom and access to a separate terrace – with a surprise bonus: a kitchenette on one side and a versatile extra room on the other, perfect for an office, kids' playroom, or hobby space. - Both bathrooms on this level feature underfloor heating for added comfort. **Additional Features:** - Completed in 2003, the complex is immaculately maintained and includes lift access from the garage directly to the apartment entrance. - All terraces and flowerbeds have been meticulously refurbished to ensure complete waterproofing and prevent any leaks. - The property includes a large parking space suitable for two cars, plus a spacious storage room ideal for bikes, golf bags, or travel gear. This is a rare opportunity to own a truly unique penthouse in one of the most desirable urbanisations in the area. With its blend of charm, practicality, and unbeatable views, this home is perfect for both full-time living and luxurious holidays. **SURFACES:** - Interior: 131sqm - Terrace: 73sqm - Garage: 34sqm - Storage: 11sqm

Features:

Pool, Sea views, Mountain views, Private garden, Lift, None, Alarm system, Parking