

+34 695 577 651

**LW**  
Estates

info@lw-estates.com

---

Apartment in Benahavís

Reference: R5158102



Bedrooms: 1

Bathrooms: 1

M<sup>2</sup>: 73

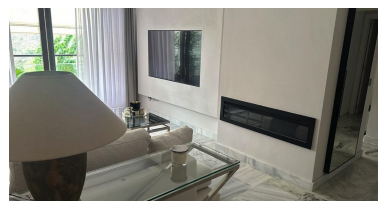
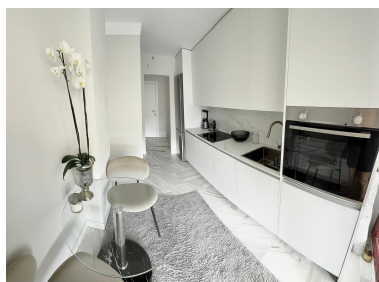
Price: 310,000 €

Status: Sale

Property Type: Apartment

Parking places: by request

Printing day : 17th  
December 2025



---

Overview: Elegant Renovated 1-Bedroom Apartment in Parque Botánico, Estepona – Resort-Style Living with Premium Amenities! Discover this impeccably renovated apartment in pristine condition, boasting modern design and ready-to-move-in appeal in the sought-after Parque Botánico complex, Estepona. This sophisticated residential enclave offers one of the most comprehensive lifestyles on the Costa del Sol, with exclusive facilities designed for ultimate comfort and leisure. Spanning 73 m<sup>2</sup> built (62 m<sup>2</sup> useful), this west-facing gem on the 2nd floor provides bright, accessible living with stunning views and seamless indoor-outdoor flow. Key Features: Modern Layout: 1 spacious bedroom with built-in wardrobes, 1 contemporary bathroom, and a generous terrace for al fresco relaxation. Convenience and Accessibility: Adapted for reduced mobility with elevator access, included garage space, and a dedicated storage room. Comfort Essentials: Full air conditioning for year-round climate control, ensuring a cozy environment in every season. Luxury Community Amenities: Two pools (one indoor), fully equipped gym, sports court, sauna and jacuzzi, private chiringuito, library, lush gardens, and 24-hour security – all within a secure, resort-like setting. Prime Orientation and Location: West-facing for afternoon sun and natural light; exterior position on the 2nd floor with easy access to Estepona's beaches, shops, and attractions. This turnkey property is perfect for a serene retreat or savvy investment in a vibrant coastal community. Experience the epitome of sophisticated living – contact us today to arrange a viewing!

---

#### Features:

Pool, Air conditioning, Heating, Sea views, Mountain views, Private garden, Lift, None, Alarm system, 24H Security, Parking