

+34 695 577 651

**LW**  
Estates

info@lw-estates.com

Apartment in La Mairena

Reference: R5146630



Bedrooms: 3

Bathrooms: 2

M<sup>2</sup>: 166

Price: 623,000 €

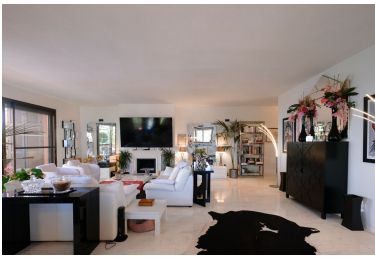
Status: Sale

Property Type: Apartment

Parking places: by request

Printing day : 5th September  
2025





---

Overview: Spectacular corner apartment in a highly sought-after area of La Mairena, 3 spacious bedrooms, with east-west orientation and panoramic views of the sea and Mountains. photovoltaic energy. Gated community with lush gardens of 19.000m<sup>2</sup> for only 45 apartments + 2 swimming pools. The whole complex is surrounded by protected green zones.. It offers a spacious, modern and very bright living space with numerous windows that open to nature and a fantastic sea view. The kitchen is open concept. It has 3 spacious bedrooms and 2 bathrooms, with a built area 166 m<sup>2</sup>, including 2 terraces of approximately 45 and 10 m<sup>2</sup>. This property includes a storage room and a private parking space in the same building accessed directly per elevator.. The largest of which is an infinity pool with incredible panoramic views of the entire coast. The property is located just 7 minutes by car from Elviria and its beaches. This privileged location, very close to the famous German School, is very quiet and at the same time offers all services. There are several golf courses less than 4 minutes away by car, and the center of Marbella is only 15 minutes away.

---

#### Features:

Pool, Air conditioning, Heating, Sea views, Mountain views, Lift, None, Parking, Holiday Home