

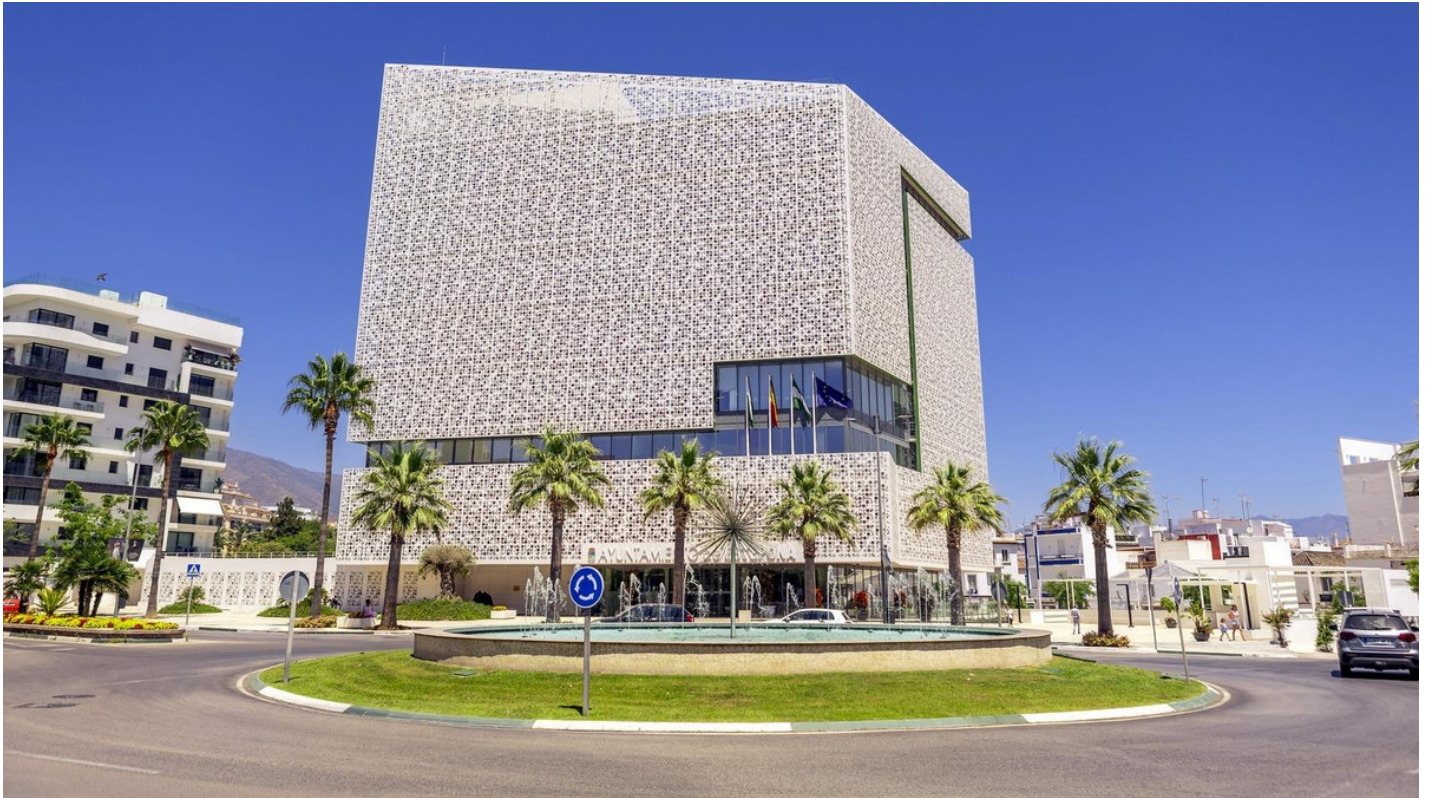
+34 695 577 651

LW
Estates

info@lw-estates.com

Commercial in Estepona

Reference: R5140408



Bedrooms: by request

Bathrooms: by request

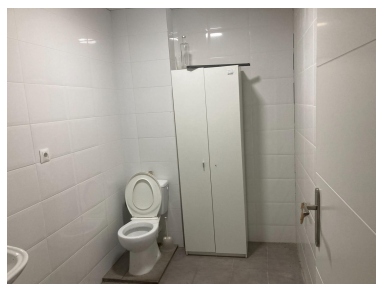
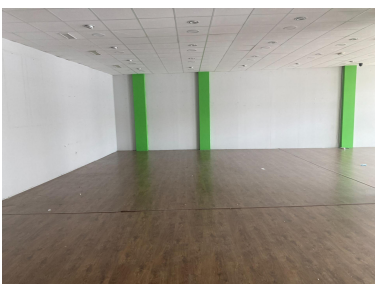
M²: 224

Price: 1,250,000 €

Status: Sale

Property Type: Commercial Parking places: by request

Printing day : 15th
September 2025



Overview: Magnificent commercial premises, with excellent location: in the heart of Estepona very close to the promenade and one of the busiest avenues of the city. It is located in an area highly frequented by both pedestrians and vehicles and is surrounded by other businesses. It has 224 meters with interior storage area, it also has air conditioning. This local, has high visibility and is located on a corner. It has a glazed facade, a place where your business will be very seen. Call us now to make an appointment.

Features:

Air conditioning