

+34 695 577 651

LW
Estates

info@lw-estates.com

Rustic house in Estacion de Cartama

Reference: R5139712



Bedrooms: 3

Bathrooms: 1

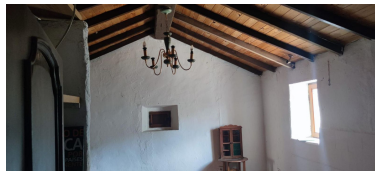
M²: 98

Price: 235,000 €

Status: Sale

Property Type: Rustic house Parking places: by request

Printing day : 17th
September 2025



Overview:Finca - Cortijo, Estacion de Cartama, Costa del Sol. 3 Bedrooms, 1 Bathroom, Built 99 m², Garden/Plot 7000 m². Cortijo located in the mountains, opposite the village of Cártama, (Málaga). 2.5 kilometers from what is known as Cártama Estacion, where the highway that connects Cártama with Málaga passes (15 km). Access is via a well-maintained compacted dirt road. The house is located on the south-facing slope of a hill with sweeping views over the Guadalhorce River valley. The building is old and well-preserved. The constructed area is 98 m2, as stated in the deeds. The house has recently been renovated as the owners planned to live there. The entire roof of the house has been improved and thermally insulated with exposed wood. It has a 20.30 m2 bedroom (previously two) with wooden floors and ceilings. A second bedroom is 16.50 m2 with rustic clay tile floors. A 22.66 m2 living room with an open-plan kitchen, fireplace, and air conditioning; the floor is clay tile and the ceiling is wooden; a pantry and a full bathroom; all very rustic and authentic. A very pleasant shaded terrace with a barbecue, surrounded by planters and plants, as well as a small pool. Outside the house, there is a storage room and a covered parking space for one car with space for several more. It has electricity and well water. Behind the house, there is a space of approximately 150/200 m2 that was once a vegetable garden and is now abandoned. It also includes a chicken coop. This property has all its documentation standardized and updated The photos are out of date. I think they're from 2005.all photographs and information provided by the vendor. Setting : Country, Close To Town. Orientation : South, South West. Condition : Good. Pool : Private. Climate Control : Air Conditioning, Hot A/C, Cold A/C. Views : Mountain, Panoramic, Garden. Features : Private Terrace. Kitchen : Fully Fitted. Garden : Private. Security : Gated Complex. Parking : Open, Private. Utilities : Electricity. Category : Holiday Homes, Resale.

Features:

Pool, Air conditioning, Heating, Mountain views, Private garden, None, Parking, Holiday Home, Resale