

+34 695 577 651

LW
Estates

info@lw-estates.com

Apartment in Manilva

Reference: R5135437



Bedrooms: 2

Bathrooms: 2

M²: 88

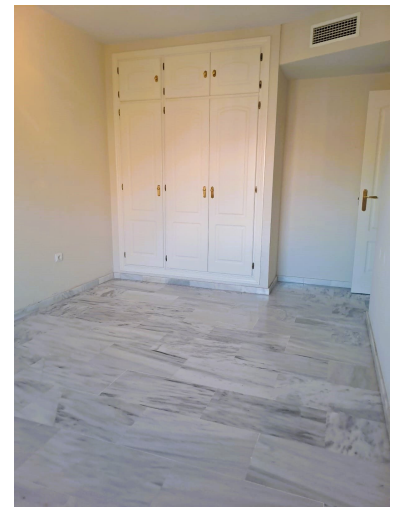
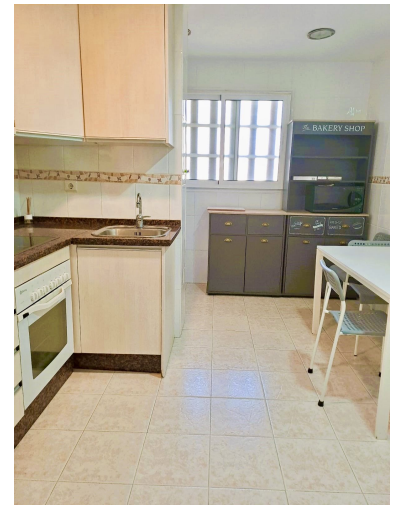
Price: 265,000 €

Status: Sale

Property Type: Apartment

Parking places: by request

Printing day : 19th
September 2025



Overview: Discover this stunning 88m² with 2 bedrooms, just steps from the golden sands of Aldea beach! ■

Highlights:

- Spacious & modern with a 14m² south-facing terrace boasting breathtaking views of the sea, lush gardens, and sparkling pool.
- Bright, open-plan living room flowing onto the terrace, perfect for relaxing or entertaining.
- Master bedroom with private en-suite, plus a second generous bedroom and separate bathroom.
- Fully equipped kitchen with laundry area for ultimate convenience. ■
- Bonus:** Includes an underground parking space! ???? **Resort-Style Living:** Nestled in a beautifully maintained residence with a large swimming pool, vibrant gardens, and a friendly concierge to make every day feel like a vacation. ???? **Prime Location:**
- A short stroll to Aldea's wide, sandy beach.
- Minutes from vibrant Sabinillas, La Duquesa port (5 mins), chic Sotogrande (10 mins), or charming Estepona and its marina (15 mins).

Features:

Beachfront, Pool, Air conditioning, Sea views, None, Private garden, Parking, Holiday Home, Investment