

+34 695 577 651

LW
Estates

info@lw-estates.com

Apartment in Manilva

Reference: R5127223



Bedrooms: 2

Bathrooms: 2

M²: 106

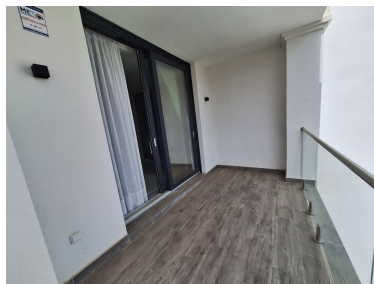
Price: 379,000 €

Status: Sale

Property Type: Apartment

Parking places: by request

Printing day : 20th
December 2025





Overview:Modern Apartment with Sea Views and Private Terrace – La Paloma Manilva, Costa del Sol This elegant apartment, measuring 105.9 m² (plus a 15.08 m² terrace), offers light, comfort, and a peaceful setting just 200 m from the beach. Located in a gated community with controlled access, it features a private covered terrace with soundproof glass enclosures and a parking space included. The home features a spacious and bright living-dining room, a fully equipped open-plan kitchen, a master bedroom with an en-suite bathroom and built-in wardrobes, a second full bathroom, and air conditioning and central heating. Its modern, open design maximizes natural light and views of the Mediterranean Sea and the communal pool. The complex offers a communal pool, well-maintained gardens, an elevator, and adapted access. Fiber optic cable is available. Strategic location: Just 200m from the beach Quiet and well-connected surroundings Quick access to highways, golf courses, shopping areas, and schools Just a few minutes' drive from Sotogrande, Estepona, and Marbella Highlights: Middle floor with ideal orientation providing plenty of natural light Private terrace with sea views and glass enclosures Gated community with pool and well-maintained gardens Elevator and accessible access A unique opportunity to enjoy the Costa del Sol in a modern, bright apartment with a private terrace and sea views, ideal as a permanent residence, second home, or holiday investment.

Features:

Pool, Air conditioning, Heating, Sea views, Private garden, Lift, None, Alarm system, 24H Security, Parking, Holiday Home, Investment, Resale