

+34 695 577 651

LW
Estates

info@lw-estates.com

Land in Atalaya

Reference: R5120911



Bedrooms: by request

Bathrooms: by request

M²: 2,595

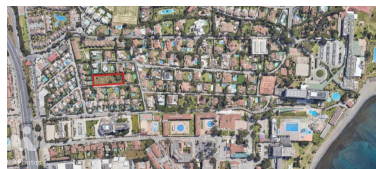
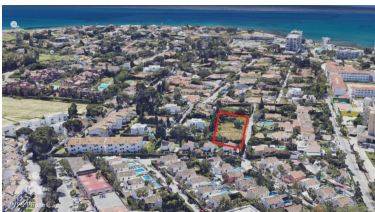
Price: 2,890,000 €

Status: Sale

Property Type: Land

Parking places: by request

Printing day : 19th
September 2025





Overview: Exclusive Beachside Plots – Costa del Sol An exceptional opportunity to acquire three prime plots of 865 m² each (total 2,595 m²), available individually or as a combined estate. Ideally suited for the creation of three luxury villas or one expansive private residence, these plots are positioned in one of the most sought-after beachside enclaves on the Costa del Sol. The land is perfectly flat and beautifully green, offering effortless building potential with full planning permissions already in place. Located just a short stroll from the golden sands, these plots also enjoy walking-distance access to a supermarket, pharmacy, and a selection of quality restaurants. The area is peaceful and exclusive, yet benefits from excellent road connections, placing Puerto Banús, Marbella, and Estepona just minutes away. This is more than just land; it is the foundation for a lifestyle defined by elegance, convenience, and coastal beauty. Whether envisioned as three distinctive villas or one magnificent estate, this property offers a rare chance to secure your place in one of Europe's most desirable destinations.

Features:

None, None, Pool, Sea views, Mountain views, Private garden, Parking, Beachfront, Investment