

+34 695 577 651

LW
Estates

info@lw-estates.com

Villa in Torremuelle

Reference: R5116162



Bedrooms: 6

Bathrooms: 5

M²: 442

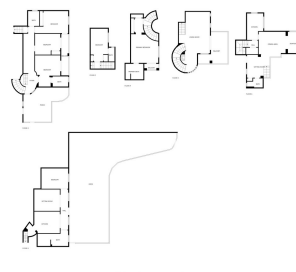
Price: 1,250,000 €

Status: Sale

Property Type: Villa

Parking places: by request

Printing day : 21st
September 2025





Overview: Situated in the heart of Torremuelle, one of Benalmádena's most exclusive and tranquil residential enclaves, this exceptional Andalusian-style villa blends traditional charm with refined modern comfort. Offering 6 spacious bedrooms, 5 bathrooms, and an independent guest apartment, the home is surrounded by mature gardens, expansive terraces, and panoramic views over the Mediterranean coastline and surrounding hills. The villa welcomes you with classic Andalusian architecture and warm, open spaces designed for both relaxed living and elegant entertaining. Inside, you'll find marfil marble floors that flow throughout the main level, enhancing the sense of luxury and natural light. The impressive open-plan living and dining room is framed by large picture windows and direct access to sunny terraces, ideal for enjoying the spectacular vistas and indoor-outdoor lifestyle. The layout includes long hallways, multiple storage rooms, and a thoughtful division of spaces, providing both functionality and comfort for family living. A standout feature of the property is the independent apartment on one of the upper terraces — complete with its own fully equipped kitchen, laundry room, and living area. This private guest suite is perfect for extended family, visitors, or as a separate rental opportunity. Outdoors, enjoy beautifully maintained Mediterranean gardens, a private swimming pool, and several large terraces ideal for al fresco dining, sunbathing, or entertaining under the stars. The villa sits on a quiet residential street, just a short walk to key amenities. Boasting panoramic sea and mountain views, this spacious property combines classic Mediterranean charm with modern comfort, perfect for families or as a luxury holiday retreat. Prime Location: 2 minutes to Torremuelle train station (direct access to Málaga city, airport, and Fuengirola) 5 minutes from the beach and seafront promenade 2 minutes to The British School of Benalmádena Close to Torremuelle Racket Center (tennis & padel) Scenic walking routes, cafés, shops, and restaurants all within walking distance Located on a peaceful and upscale street in a highly desirable residential area Property Summary: 6 Bedrooms | 5 Bathrooms Independent Guest Apartment with Kitchen & Laundry Large Open-Plan Living/Dining Area with Sea Views Elegant Marfil Marble Flooring Throughout Main Living Areas Long Hallways and Ample Storage Private Swimming Pool Extensive Gardens and Panoramic Terraces 2 Private Parking Spaces Authentic Andalusian Style with Modern Comfort This villa offers a perfect combination of timeless style, space, privacy, and unbeatable proximity to all essentials. Whether you are looking for a full-time residence, second home, or premium rental property, this is an exceptional opportunity in one of the most coveted corners of the Costa del Sol.

Features:

Air conditioning, Sea views, Private garden, Pool