

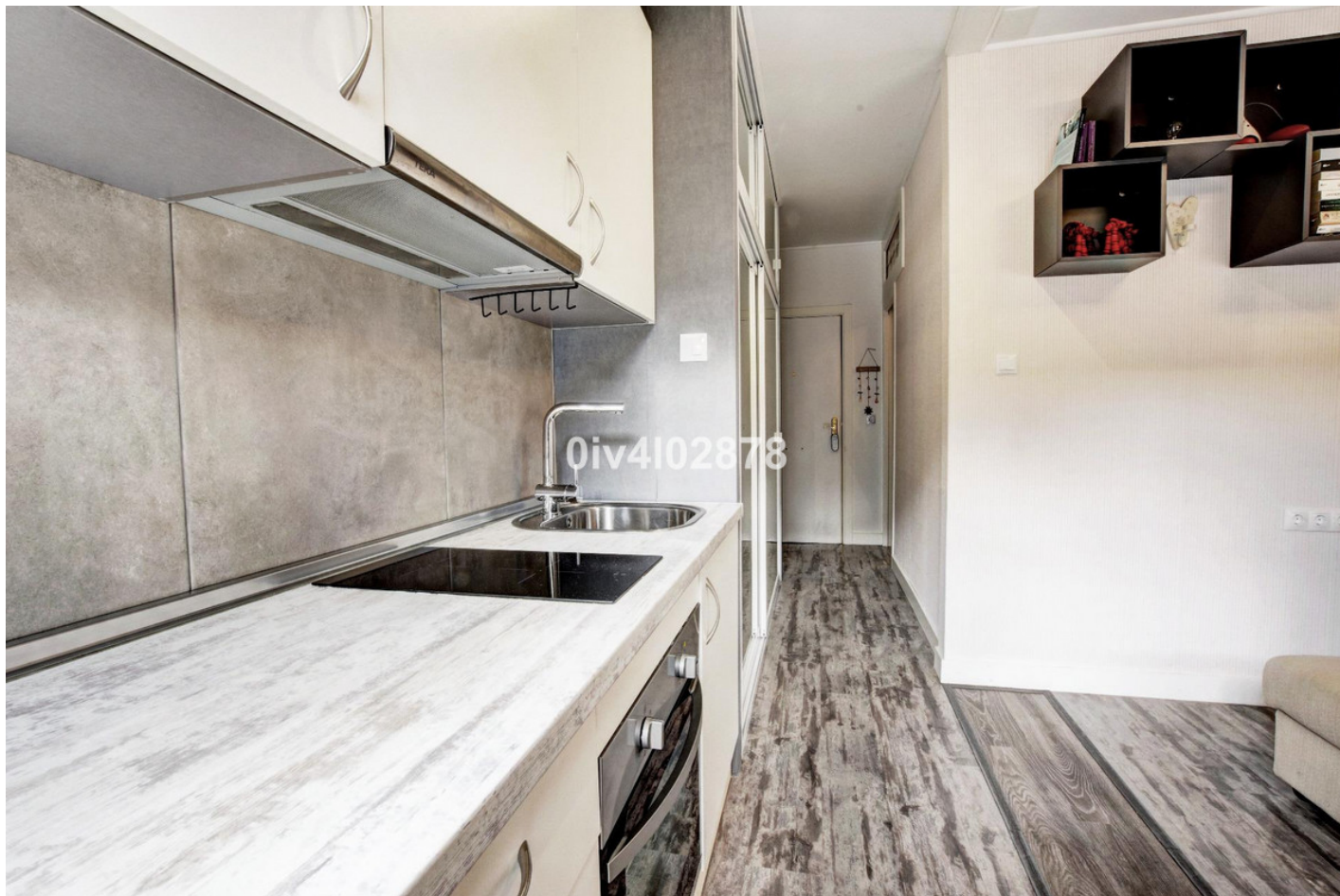
+34 695 577 651

LW
Estates

info@lw-estates.com

Apartment in Benalmadena Costa

Reference: R5107294



Bedrooms: 1

Bathrooms: 1

M²: 28

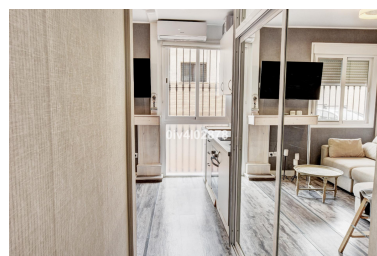
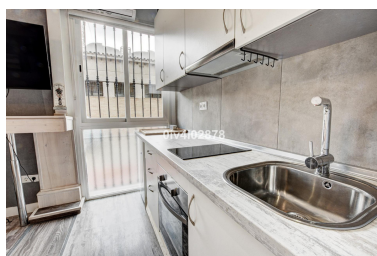
Price: 160,000 €

Status: Sale

Property Type: Apartment

Parking places: by request

Printing day : 21st
September 2025





Overview: Walk to Everything! Refurbished Ground Floor Apartment Between Marina & Park Embrace the coastal lifestyle in this attractively refurbished one-bedroom apartment, boasting an exceptional ground-floor location in one of Benalmádena's most desirable areas. Nestled perfectly between the vibrant atmosphere of Puerto Marina and the green oasis of Paloma Park, convenience is truly at your doorstep. Step inside to find a welcoming open-plan living area where the contemporary kitchen blends seamlessly with the lounge space. The bedroom has been thoughtfully updated and includes the privacy and comfort of an ensuite bathroom. A standout feature is the unusually long entrance hallway – a practical bonus offering excellent storage solutions rarely found in similar apartments. Forget the car! From here, you can easily stroll to the golden sands of the nearby beach, explore the shops, indulge in the local restaurants and tapas bars, or simply enjoy a walk through the park. Its ground-floor position ensures easy access. This apartment represents an excellent opportunity whether you're seeking a permanent residence, a low-maintenance holiday home, or a lucrative rental investment thanks to its superb condition and unbeatable location.

Features:

None, Parking, Resale