

+34 695 577 651

**LW**  
Estates

info@lw-estates.com

## Penthouse in Manilva

Reference: R5085610



Bedrooms: 2

Bathrooms: 2

M<sup>2</sup>: 111

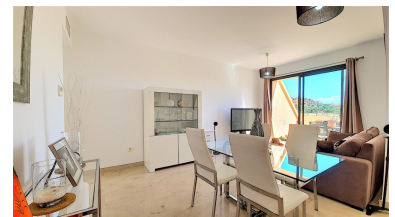
Price: 259,000 €

Status: Sale

Property Type: Penthouse

Parking places: by request

Printing day : 15th  
September 2025



Overview:Excellent Investment Opportunity: whether you're looking for a main residence, a holiday home, or a buy-to-let investment, this stunning penthouse is sure to meet all your expectations. Located within the largest residential complex in the area, it offers a wide range of amenities including several communal swimming pools, padel courts, and 24-hour security with gated access. Just 2 km from La Duquesa Marina and the sea, this property is sure to charm you! The completely furnished apartment features a separate kitchen, and a bright living room that opens onto a beautiful 14 m<sup>2</sup> east-facing terrace – perfect for enjoying breathtaking sunrises. It also includes a full bathroom, a double attic bedroom with access to a small terrace, and a master bedroom with an en-suite bathroom (including a bathtub) and direct access to the main terrace. In addition, the property comes with an 11 m<sup>2</sup> underground parking space and a 6 m<sup>2</sup> storage room, providing all the comfort you need. Don't hesitate to arrange a viewing with our agents, who will be delighted to assist you. In accordance with Decree 218/2005 of 11 October by the Junta de Andalucía, we inform clients that the property transfer tax, notary fees, and land registry costs are not included in the price. However, estate agency fees are included.

---

#### Features:

Pool, Air conditioning, Sea views, Lift, None, Parking