

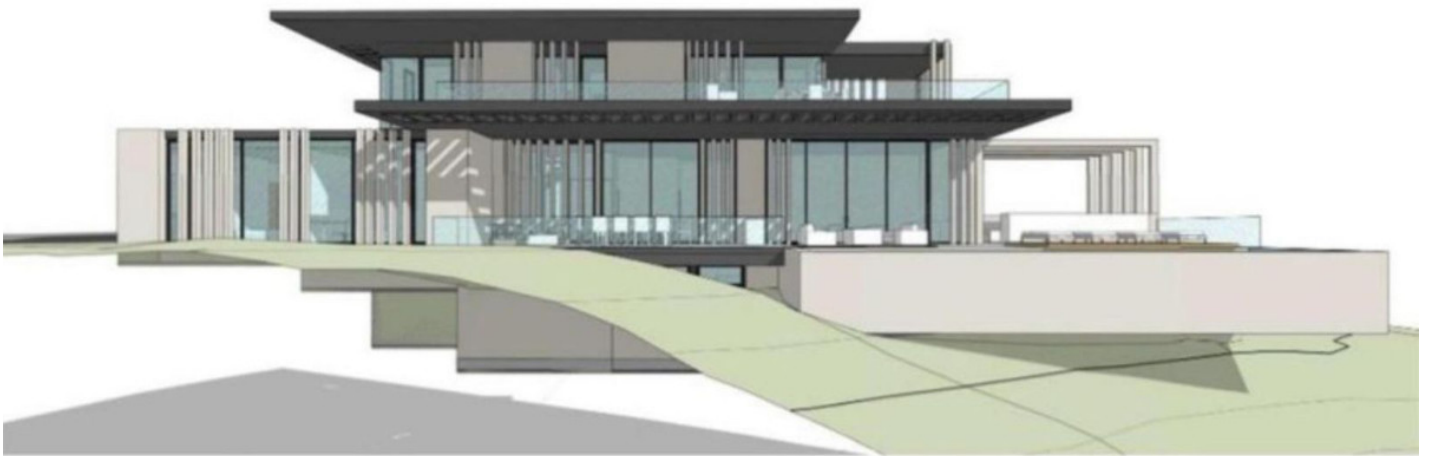
+34 695 577 651

**LW**  
Estates

info@lw-estates.com

Land in Elviria

Reference: R5076739



Bedrooms: by request

Bathrooms: by request

M<sup>2</sup>: 1,516

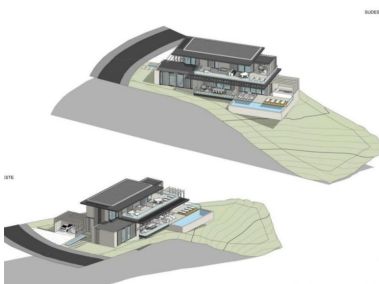
Price: 510,000 €

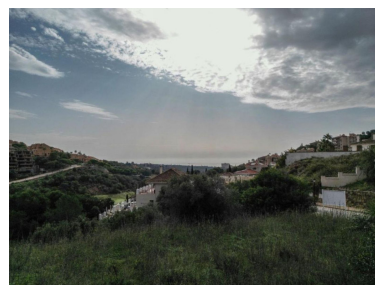
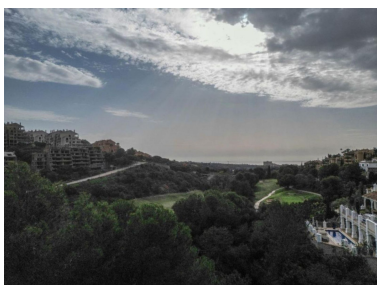
Status: Sale

Property Type: Land

Parking places: by request

Printing day : 9th May 2026





---

Overview: Residential Plot, Elviria, Costa del Sol. Garden/Plot 1516 m<sup>2</sup>. Setting : Close To Golf, Close To Schools, Urbanisation. Orientation : South. Pool : Room For Pool. Views : Sea, Golf. Garden : Private. Category : Resale.

---

Features:

Pool, Sea views, Private garden, Resale