

+34 695 577 651

**LW**  
Estates

info@lw-estates.com

Commercial in Marbella

Reference: R5043622



Bedrooms: by request

Bathrooms: 1

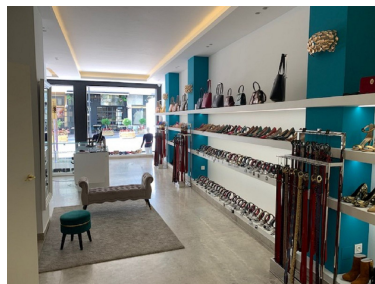
M<sup>2</sup>: 243

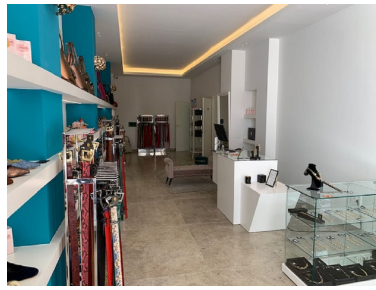
Price: 495,000 €

Status: Sale

Property Type: Commercial Parking places: by request

Printing day : 21st  
September 2025





---

Overview: Investment opportunity. Commercial premises for sale in excellent location close to the Paseo Marítimo. Large commercial premises for sale located in a privileged, high traffic area, just a few metres from the Paseo Marítimo. This strategic location guarantees great visibility and a constant flow of potential clients, ideal for a wide variety of businesses. The premises have a total surface area of 243 m<sup>2</sup>, distributed over two floors, which allows for a versatile and functional organisation of the space. Its design and dimensions make it suitable for commercial activities as well as for offices, service centres or restaurants. Possibility of keeping the business running, it would enter the existing furniture plus all the current stock for an amount of 50,000 €. Outstanding characteristics: Surface area: 243 m<sup>2</sup>. Distribution: 2 floors. Area with excellent profitability. High flow of people all day long. A few steps away from the sea and tourist areas. This premises is an excellent opportunity for both entrepreneurs and investors looking for profitability in one of the most dynamic and sought-after areas of the city.

---

Features:

None, Investment, Resale