

+34 695 577 651

LW
Estates

info@lw-estates.com

Apartment in Manilva

Reference: R5023462



Bedrooms: 3

Bathrooms: 1

M²: 96

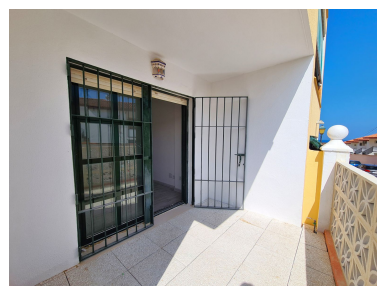
Price: 269,000 €

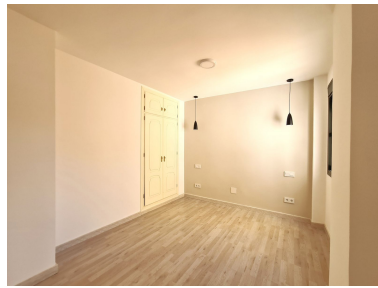
Status: Sale

Property Type: Apartment

Parking places: by request

Printing day : 1st July 2025





Overview: SUPERB 3-BEDROOM GROUND FLOOR APARTMENT IN A FRONTLINE BEACH DEVELOPMENT

This property is located in a quiet residential area on the beachfront, next to the popular Puerto de la Duquesa and San Luis de Sabinillas. Located between Estepona and Sotogrande, both a 10-minute drive away, it is close to supermarkets, shops, and restaurants. This property is being delivered renovated and fully equipped. The apartment features a spacious living-dining room with access to the terrace with afternoon sun and partial sea views. The kitchen is open to the living room and is completely new with brand new appliances. It has 3 bedrooms with built-in wardrobes, two of which have access to the terrace. It also has a full bathroom equipped with a shower. The property also offers a private parking space within the community grounds, as well as a communal pool and gardens. **VIEWING RECOMMENDED!**

Features:

Pool, Sea views, Lift, None, Private garden, Parking, Holiday Home, Investment, Resale