

+34 695 577 651

LW
Estates

info@lw-estates.com

Penthouse in Benalmadena

Reference: R5006233

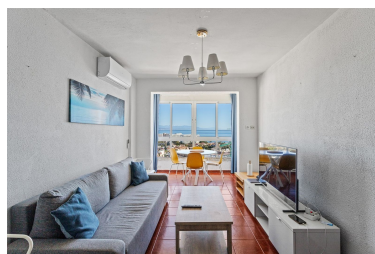


Bedrooms: 2
Status: Sale

Bathrooms: 1
Property Type: Penthouse

M²: 63
Parking places: by request

Price: 349,000 €
Printing day : 11th May 2025





Overview: Welcome to this fantastic apartment along the coast of Benalmádena! Here you live in an exclusive environment that combines a vibrant lifestyle with the proximity to both the beach and the city's pulse. Within walking distance, you'll find charming restaurants, shops, entertainment, and other amenities that make everyday life more enjoyable. Additionally, you have access to public transportation that easily takes you along the entire coastline and to nearby towns. The apartment is bright and airy, with a lovely glazed terrace that offers stunning views of both the Mediterranean Sea and the beautiful mountains. Inside, there are two spacious bedrooms, a fully equipped bathroom, a kitchen, and a cozy living room with direct access to the terrace. Not only is the beach just a stone's throw away, but the community also offers a large communal pool, surrounded by lush gardens where you can relax and enjoy the pleasant climate. Here you get a home that combines location and quality of life, in the heart of one of the most iconic places on the Costa del Sol!

Features:

None, Pool, Air conditioning, Heating, Sea views, Mountain views, Lift, None, Private garden, Beachfront, Holiday Home, Investment, Resale