

+34 695 577 651

LW
Estates

info@lw-estates.com

Apartment in Manilva

Reference: R5005021



Bedrooms: 2

Bathrooms: 2

M²: 126

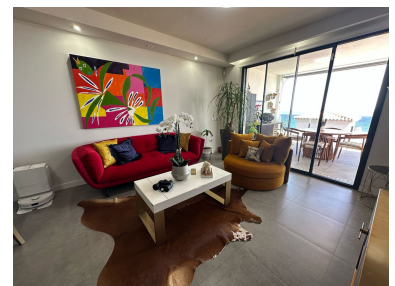
Price: 463,000 €

Status: Sale

Property Type: Apartment

Parking places: by request

Printing day : 30th June
2025



Overview: Luxury Seafront Apartment with Stunning Views Located in the highly sought-after Chullera area of Manilva, Málaga, this spectacular luxury apartment redefines coastal living, offering elegance, comfort, and breathtaking sea views. **Property Features:** ✓ Spacious Interiors: 126.4 m² of beautifully designed living space ✓ Panoramic Terrace: A covered 28.76 m² terrace with uninterrupted sea views ✓ 2 Large Bedrooms and 2 Modern Bathrooms, designed for ultimate comfort ✓ Walk-in Closet with built-in wardrobes and fabulous sea views ✓ High-End Kitchen: Fully equipped with a central island and luxury finishes ✓ Independent Laundry Area Premium Quality & Comfort: ✓ Modern, high-quality finishes throughout ✓ Central air conditioning and aerothermal heating system, ensuring energy efficiency year-round **Exclusive Residential Complex:** ✓ Two outdoor pools + heated indoor pool ✓ Sauna & Fully Equipped Gym for wellness and relaxation ✓ Beautiful landscaped gardens, ideal for enjoying the Mediterranean climate ✓ Private parking space & storage room for added convenience and security **Prime Location:** Just steps from the beach 5 min drive to Sotogrande | 10 min to Estepona Close to world-class golf courses, shops, schools, medical centers, and public transport This property is perfect for permanent residence or a luxurious holiday retreat. Don't miss this unique opportunity! Contact us for more information or to schedule a viewing.

Features:

Pool, Air conditioning, Sea views, Lift, None, Private garden, 24H Security, Parking