

+34 695 577 651

**LW**  
Estates

info@lw-estates.com

Land in Manilva

Reference: R4989838

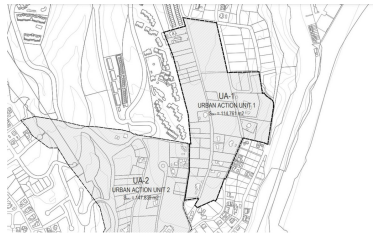


Bedrooms: by request  
Status: Sale

Bathrooms: by request  
Property Type: Land

M<sup>2</sup>: 4,000  
Parking places: by request

Price: 950,000 €  
Printing day : 7th May 2026



---

**Overview:FOR INVESTORS ONLY—LAND-BANK FOR FUTURE DEVELOPMENT AT A VERY ATTRACTIVE PRICE** An exceptional opportunity to acquire a plot with the potential to be divided and developed into 4 villas of approx. 300m each or alternatively up to 8 villas / townhouses of approx. 165m each, plus a basement, within the next 2–3 years. Located in Chullera Park, an urbanization currently undergoing ratification and redevelopment, this area will soon offer proper roads, green spaces, and modern infrastructure. After years of legal uncertainty and unfinished basic infrastructure preventing development, an agreement has now been reached between developers, residents, and the town hall to transform the entire Chullera area through a multi-phase redevelopment plan. This particular plot is part of the first phase of the project and is situated in the highest section of the area, ensuring optimal sun exposure and breathtaking sea views. While development is not yet possible, this presents a prime investment opportunity to secure a position in a structured redevelopment plan with a clear completion timeline and exit strategy. Residential Plot, Manilva, Costa del Sol. Garden/Plot \*\*4000 m<sup>2</sup>. Setting : Suburban. Orientation : South. Location : Excellent. Pool : Room For Pool. Views : Sea, Mountain, Panoramic, Urban. Category : Investment.

---

Features:

Pool, Sea views, Mountain views, Investment