

+34 695 577 651

LW
Estates

info@lw-estates.com

Commercial in Marbella

Reference: R4966543



Bedrooms: by request

Bathrooms: by request

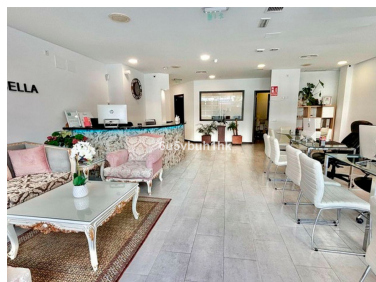
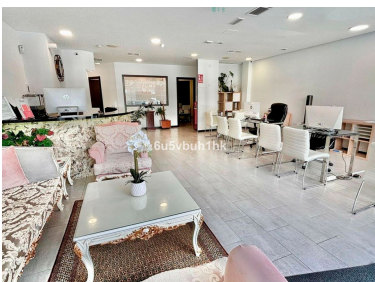
M²: 400

Price: 2,690,000 €

Status: Sale

Property Type: Commercial Parking places: by request

Printing day : 19th
December 2025





Overview: We offer a large commercial premises between Avda Ricardo Soriano and the well known Pirulí in Marbella. The premises has two floors of 200m² each one of them totally refurbished and suitable. On the ground floor it is currently divided into a shop and an office, both with equipment, furniture, offices and a toilet. On the ground floor there is a large room for various uses, meetings and a large warehouse. Ideal for use as a catering franchise, private clinic, premium brand shop etc.... High rental profitability. There is not always an opportunity to acquire premises of this size in such a commercial area.

Features: