

+34 695 577 651

LW
Estates

info@lw-estates.com

Apartment in Puerto Banús

Reference: R4958782



Bedrooms: 1

Bathrooms: 1

M²: 59

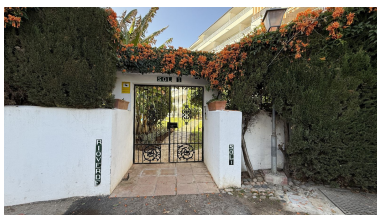
Price: 299,000 €

Status: Sale

Property Type: Apartment

Parking places: by request

Printing day : 5th September
2025



Overview: Prime Coastal Apartment – Stunning Views & Ideal Location Located near the beach, just 450 meters from the sea, this beautifully newly refurbished apartment offers breath-taking views of both the sea and the mountains. Situated in one of the best locations for holidays or short-term rentals, it is within walking distance of restaurants, bars, shops, and the beach, as well as being close to the vibrant Puerto Banús. Set within a gated community, the property features secure parking, a communal pool, and lush green gardens. With the convenience of a lift/elevator, this is a perfect choice for those seeking comfort, style, and accessibility in a prime coastal setting.

Features:

None, Pool, Air conditioning, Sea views, Mountain views, Private garden, Lift, Parking, Holiday Home, Investment, Resale