

+34 695 577 651



info@lw-estates.com

Apartment in Puerto Banús

Reference: R4949884



Bedrooms: 2

Bathrooms: 2

M²: 104

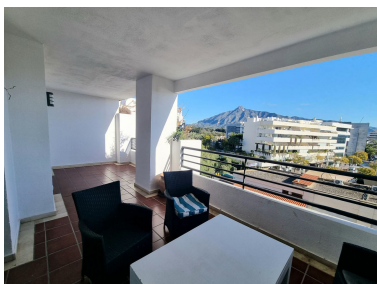
Price: 570,000 €

Status: Sale

Property Type: Apartment

Parking places: by request

Printing day : 8th June 2025





Overview: Located in the heart of Puerto Banús, this bright two-bedroom, two-bathroom apartment boasts a privileged location with breathtaking views of La Concha and partial sea views. Its east-facing orientation ensures plenty of natural light throughout the day, creating a spacious and inviting atmosphere in every room. The property features a functional layout, including a separate kitchen and laundry area, as well as air conditioning. Currently in its original condition, it offers a great opportunity to customize and adapt the space to suit the new owner's personal style and needs. Located within a private gated community, residents enjoy access to several communal swimming pools, a tennis court, 24-hour security, and underground parking. This apartment is a perfect choice as a second home in Marbella or for investors seeking a highly profitable vacation rental property. Surrounded by exclusive boutiques, fine dining restaurants, and just minutes from the beach, it offers an unbeatable opportunity to experience the Puerto Banús lifestyle.

Features:

None, None, Pool, Air conditioning, Sea views, Mountain views, Lift, None, Private garden, 24H Security, Parking