

Terraced Townhouse in Manilva

Reference: R4934011



Bedrooms: 2

Bathrooms: 2

M²: 111

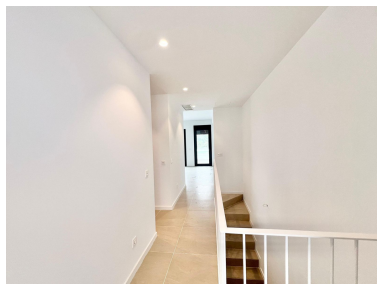
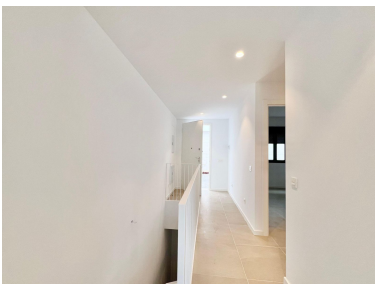
Price: 399,900 €

Status: Sale

Property Type: Terraced
Townhouse

Parking places: by request

Printing day : 7th February
2025



Overview:Stunning New Semi-Detached House with Sea View. Discover this magnificent semi-detached house, entirely new and ready to welcome you. It features an underground entrance that leads directly to your private parking space. You can access the property directly via an internal staircase from the parking area. On the ground floor, an elegant entrance hall greets you and opens into a stunning open-plan living space, comprising a modern fully equipped kitchen, a bright dining area, and a comfortable living room. The house also boasts a spacious terrace, perfect for enjoying breathtaking sea views. In the sleeping area, you will find two bedrooms, including a master suite with a private bathroom, as well as a second fully equipped bathroom. In the communal area, there is an outdoor pool, a spa, and a gym.The residence has just been completed, so you will benefit from a ten-year warranty still valid for 10 years. A property not to be missed! Contact us to arrange a viewing.

Features:

New development, Pool, Air conditioning, Heating, Sea views, Mountain views, Private garden, Parking, Luxury, Resale