

+34 695 577 651

LW
Estates

info@lw-estates.com

Apartment in Benalmadena

Reference: R4926061



Bedrooms: 1

Bathrooms: 1

M²: 55

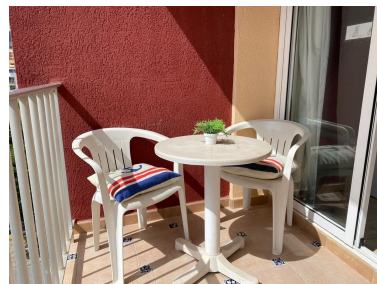
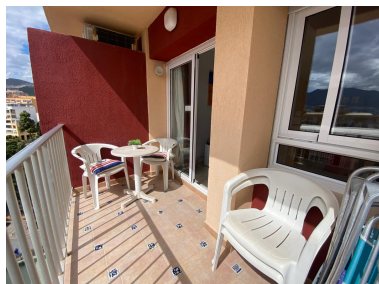
Price: 264,000 €

Status: Sale

Property Type: Apartment

Parking places: by request

Printing day : 16th
December 2025





Overview: Apartment on the Eighth Floor of Edificio Minerva, Gamonal, Benalmádena – Ideal for Living or Investment This one-bedroom property stands out for its strategic location in one of Benalmádena's most dynamic areas, currently undergoing renovation, which enhances its medium- and long-term value. Situated on the eighth floor, the apartment offers unobstructed views and excellent natural light thanks to its orientation. Its location makes it particularly appealing: just a short walk from the beach, close to Parque de la Paloma, and surrounded by amenities such as supermarkets, pharmacies, restaurants, and public transportation. The area also offers easy access to the highway, providing quick connections to Málaga, the airport, and other towns along the Costa del Sol. Edificio Minerva is part of a well-established community featuring extensive common areas with gardens, a large swimming pool, and a reception service. These features make it an ideal place for both residents and tourists. This is a secure investment opportunity with high potential as a holiday rental, thanks to the growing tourist demand on the Costa del Sol and the renewed appeal of the area. Don't miss this perfect chance to benefit from Benalmádena's booming real estate market!

Features:

None, Pool, Air conditioning, Heating, Sea views, Mountain views, Lift, None, Private garden, 24H Security, Parking, Holiday Home, Investment