

+34 695 577 651

LW
Estates

info@lw-estates.com

Penthouse in La Mairena

Reference: R4917382



Bedrooms: 2

Bathrooms: 2

M²: 100

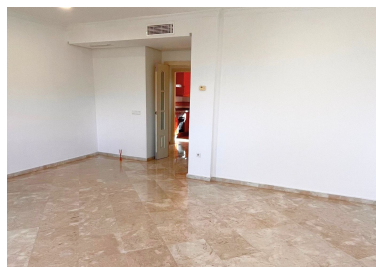
Price: 349,000 €

Status: Sale

Property Type: Penthouse

Parking places: by request

Printing day : 21st January
2025





Overview: Discover breathtaking panoramic views from this south-east facing penthouse in the highly sought-after El Vicario complex within the picturesque La Mairena, Costa del Sol. Recently renovated and presented in excellent condition, this top-floor apartment offers stunning vistas across the countryside and coastline, reaching as far as Benalmadena Pueblo. Situated just a short 15-minute drive from the beaches of Marbella East, it boasts a spacious living and dining area with large windows and patio doors leading to a generously sized terrace. The modern kitchen includes a separate utility room. El Vicario is a renowned residential complex within La Mairena, a location renowned for its stunning natural beauty. This property presents a unique opportunity to acquire a desirable apartment in one of the most coveted complexes in the area. Furthermore, this property includes an allocated parking space and a convenient storage room

Features:

Pool, Air conditioning, Heating, Sea views, Mountain views, None, Private garden, Parking, Investment