

+34 695 577 651

LW
Estates

info@lw-estates.com

Penthouse in Calahonda

Reference: R4906957

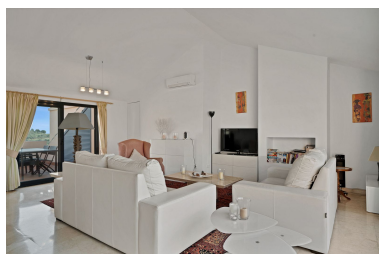


Bedrooms: 3
Status: Sale

Bathrooms: 2
Property Type: Penthouse

M²: 151
Parking places: by request

Price: 440,000 €
Printing day : 7th June 2025





Overview: Stunning Duplex Penthouse with Breathtaking Sea and Mountain Views in Calahonda. Stunning, spacious, and light duplex penthouse with sea and mountain views. The complex is very well-maintained, with two beautiful swimming pools and beautifully landscaped gardens surrounding it. Upon entering, there are three very spacious bedrooms and two bathrooms. Two of the bedrooms open onto a very large covered terrace with sea views. The upper floor has terraces on both sides, one with sea views and the other with mountain views. The living room is spacious with the option to use the fireplace. Due to the many windows and its location, the apartment is very bright. It is situated in the higher part of Calahonda, which ensures phenomenal views and a peaceful atmosphere. This apartment is ideal as a second home since it is close to golf courses, tennis clubs, and the beautiful coastline. Renting is prohibited, so it is always quiet, allowing you to enjoy the pool without any noise from renters. We would be happy to show you this apartment

Features:

Pool, Air conditioning, Heating, Sea views, Mountain views, Lift, None, Private garden, Parking, Luxury, Resale