

+34 695 577 651



info@lw-estates.com

Commercial in San Pedro de Alcántara

Reference: R4904932



Bedrooms: by request

Bathrooms: by request

M²: 35

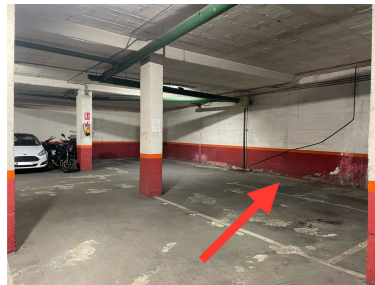
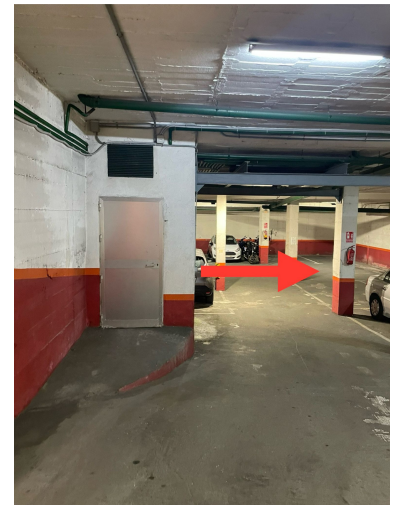
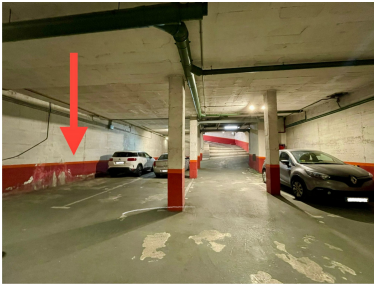
Price: 23,330 €

Status: Sale

Property Type: Commercial

Parking places: by request

Printing day : 12th February
2025



Overview: Looking for convenience and security for your vehicle in a strategic location? We present this parking space located in the basement of building in the heart of San Pedro Alcántara, Marbella. - Practical Access: Pedestrian and vehicle entrance directly from the street, ensuring convenience and speed. - Perfect Location: Located on the west side of the building, marked with number 6, with easy and clear access. - Ideal Space: The parking space has an area of 13.65 m², making it spacious and functional for any type of vehicle. The building is located in a central and well-connected area of San Pedro Alcántara, with immediate access to: - Shops, restaurants, and essential services. - Quick connection to the main roads of the Costa del Sol. - Proximity to residential areas, offices, and recreational areas, making this parking space a practical and profitable investment. Contact us now for more information or to schedule a visit!

Features:

Parking