

+34 695 577 651



info@lw-estates.com

Apartment in Benahavís

Reference: R4895101



Bedrooms: 2

Bathrooms: 2

M²: 80

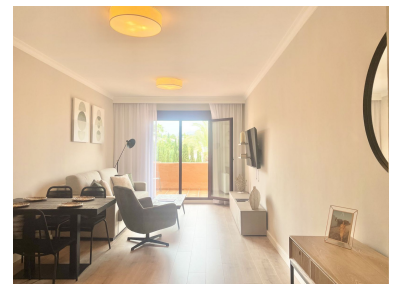
Price: 365,000 €

Status: Sale

Property Type: Apartment

Parking places: by request

Printing day : 16th
December 2025





Overview: A stunning 2-bedroom, 2-bathroom, first floor apartment in a wonderful resort, offering Sea, Golf, and Mountain Views. This practical hassle-free investment property offers the perfect blend of resort hotel services and amenities with the independence of an apartment. Enjoy access to multiple swimming pools, lush gardens, a co-working space, and a professionally equipped gym. The resort is a serene haven on the edge of El Paraiso Golf, and close to Villa Padierna Golf, Tramos Golf, Atalaya Golf, and Guadalmina Golf. Located at the intersection of Marbella, Estepona, and Benahavís, this prime spot ensures proximity to stunning beaches, top-notch golf courses, and a plethora of coastal activities. The resort's rental program makes owning a Marbella property effortless, allowing you to enjoy a fully serviced resort while also benefiting from consistent rental income potential. Parking and Storage is included. *The photos provided are for illustrative purposes and may not correspond to the actual property. We are pleased to announce a small selection of available units, prices ranging from 245.000 € to 449.000 €. Contact us today for more information

Features:

Pool, Air conditioning, Heating, Mountain views, Private garden, Lift, None, 24H Security, Parking, Holiday Home, Investment, Resale