

+34 695 577 651



info@lw-estates.com

Apartment in Atalaya

Reference: R4893520



Bedrooms: 2

Bathrooms: 3

M²: 100

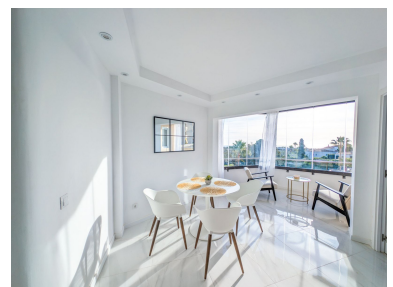
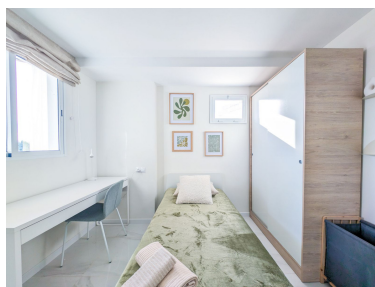
Price: 345,000 €

Status: Sale

Property Type: Apartment

Parking places: by request

Printing day : 7th February 2025



Overview: Fully renovated 2 bedroom corner apartment with panoramic sea, golf and mountain views, located in one of Atalaya's most desirable urbanisations next to the Atalaya Golf Club. This stunning, fully renovated 2-bedroom, 3-bathroom corner apartment is in excellent condition and ready to be enjoyed. This home offers a perfect blend of modern comfort, high-end finishes, and breathtaking views. You can access the apartment from the street level (Wheel Chair friendly). Spanning 100 sqm of living space, the apartment boasts a spacious and comfortably furnished living room, seamlessly connected to a beautiful open-concept kitchen with a luxurious wood finish and custom lighting. Thoughtfully designed, custom lighting has been fitted throughout the entire apartment, enhancing its warm and inviting ambiance. Both generously sized bedrooms are flooded with natural light, creating bright and serene spaces to unwind. The apartment also features two spacious balconies totaling 28 sqm with a south/east orientation, ensuring plenty of sunlight throughout the day. From the private terrace, enjoy exceptional panoramic views of the golf course, the sea, and the iconic La Concha mountain. Situated in a private and secure community, residents have access to a communal pool, landscaped gardens, and communal parking. Access to the apartment requires using stairs. Additional benefits include hot water and air conditioning (warm/cold) included in the community fees. This beautifully upgraded, move-in-ready home is perfect for golf lovers or anyone seeking a stylish retreat on the Costa del Sol.

Features:

None, Pool, Air conditioning, Heating, Sea views, Mountain views, Private garden, Lift, None, Alarm system, Parking, Holiday Home, Investment, Luxury