

+34 695 577 651

LW
Estates

info@lw-estates.com

Penthouse in Benahavís

Reference: R4851280



Bedrooms: 2

Bathrooms: 1

M²: 100

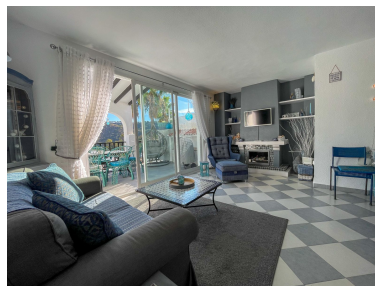
Price: 270,000 €

Status: Sale

Property Type: Penthouse

Parking places: by request

Printing day : 19th October
2024





Overview:Stunning 2bed 1 bath apartment located in the center of Benahavis village in Urb. Las Lomas. This recently renovated apartment consists of an open plan kitchen and living room area with direct access to a magnificent large terrace with stunning views. Enjoy the benefits of being located in the center of Benahavis but on an elevated position within the village away from the busy streets. Community swimming pool within the complex. High rental profitability in short term lets with a vast amount of recurring clients. Street parking - No lift.

Features:

Pool, Mountain views, None, Parking