

+34 695 577 651

LW
Estates

info@lw-estates.com

Commercial in Marbella

Reference: R4842325



Bedrooms: by request

Bathrooms: by request

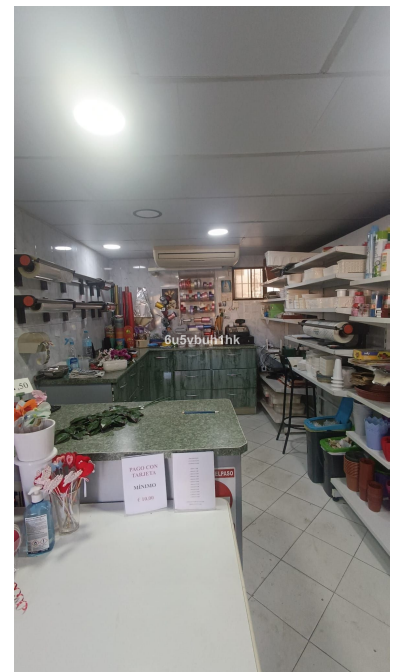
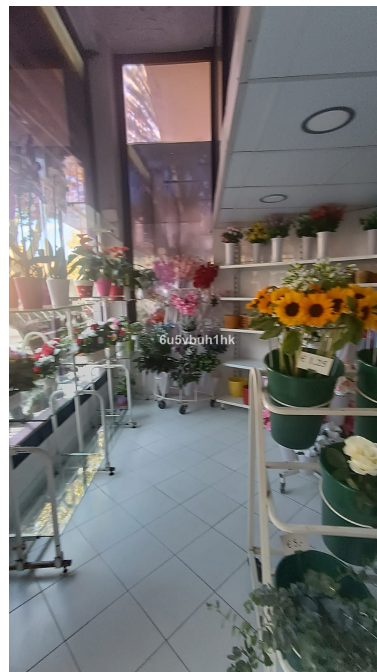
M²: 100

Price: 640,000 €

Status: Sale

Property Type: Commercial Parking places: by request

Printing day : 21st
September 2025



Overview:PRICE ADJUSTMENT! Commercial Premises in Marbella's Prime Location – Now More Attractive Than Ever Seize this incredible opportunity to own two connected commercial premises in a strategic location, offering unparalleled visibility and flexibility! ■ Key Highlights: Triple Frontage: 20 meters on a bustling main street, with additional frontages on two secondary streets, including one leading to a popular supermarket garage. Spacious Layout: 100 m² at street level + 80 m² mezzanine, perfect for any business type. Prime Corner Terrace: High pedestrian and vehicular traffic at one of Marbella's busiest intersections. Optimal Orientation: South, west, and north-facing frontages ensure abundant natural light throughout the day. Strategic Location: Close to key public offices and services. Just minutes away from a major shopping center and other high-traffic areas. This is your chance to establish or expand your business in Marbella's vibrant commercial hub. Act now and benefit from the newly adjusted price—opportunities like this don't last long! Contact us today to schedule a viewing and discover the full potential of these exceptional premises.

Features:

Air conditioning