

+34 695 577 651

**LW**  
Estates

info@lw-estates.com

Penthouse in Benalmadena Pueblo

Reference: R4838542

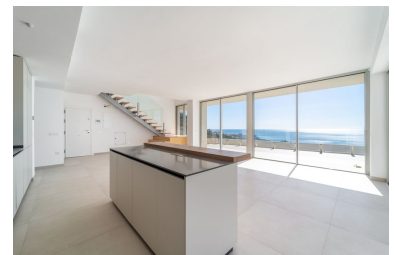
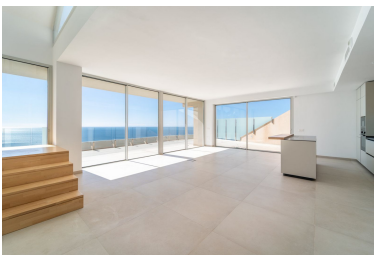


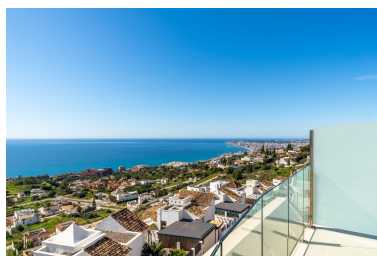
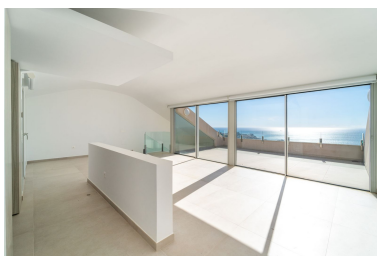
Bedrooms: 4  
Status: Sale

Bathrooms: 3  
Property Type: Penthouse

M<sup>2</sup>: 215  
Parking places: by request

Price: 1,289,000 €  
Printing day : 7th May 2026





---

Overview: Brand new south facing penthouse duplex, located in the exclusive urbanization of Stupa Hills. The property consists of hall, 3 bedrooms with built-in wardrobes and electric blinds, bathroom and guest toilet, open plan kitchen fully furnished and equipped with electrical appliances from Siemens. Spacious living-dining room that leads out to a terrace of 65m<sup>2</sup> with panoramic sea views, the Fuengirola Bay and of the Buddhist Temple. On the top floor is located the main bedroom with walk-in closet, ensuite bathroom and laundry area. The bedroom leads out to a terrace of 21m<sup>2</sup> with panoramic sea views. Air conditioning hot and cold with Airzone, video intercom, domotic system, pre-installation alarm system. Includes two parking spaces and one storage room.

---

Features:

New development, Air conditioning, Sea views, Lift, None, Private garden, Parking, Resale