

+34 695 577 651



info@lw-estates.com

---

## Penthouse in Benahavís

Reference: R4827628



Bedrooms: 3

Bathrooms: 2

M<sup>2</sup>: 119

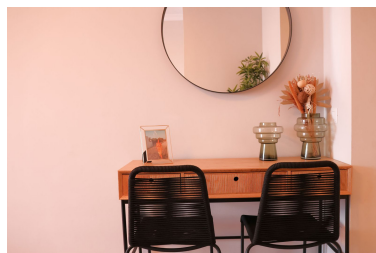
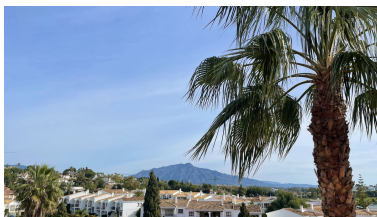
Price: 480,000 €

Status: Sale

Property Type: Penthouse

Parking places: by request

Printing day : 14th  
September 2025



Overview:3 bedroom Penthouse Duplex with touristic license, recently renovated, fully furnished and beautifully decorated. Surrounded by extraordinary large terraces on the south, east and west sides on both levels; and with access from the living room, master bedroom, second bedroom and top of the stairs; providing ample outdoor space and panoramic views of the La Concha mountains and the renowned El Paraíso Golf Course; this duplex penthouse boasts a fully fitted modern kitchen, a spacious living room, and elegant guest bedrooms along with a guest bathroom. The top floor is dedicated exclusively to the master bedroom, complete with an ensuite bathroom and two terraces. Homeowners and guests can enjoy multiple swimming pools, lush gardens, a co-working space, and a professionally equipped gym. This is an ideal opportunity for those seeking a tranquil holiday retreat close to golf courses and beaches. This Frontline Golf resort is located on the edge of El Paraiso Golf and a stones throw away from Villa Padierna Golf, Tramores Golf, Atalaya Golf, and Guadalmina Golf. Situated at the intersection of Marbella, Estepona, and Benahavís, it is a short 10 minute drive to Playa del Saladillo beach. The property comes with an underground parking space and storage room, as well as a rental license and easy rental management through the resort. We are pleased to announce a limited selection of available units, with prices ranging from 245,000 € to 510,000 €. Contact us today for more information.

---

#### Features:

Pool, Air conditioning, Mountain views, Lift, Private garden, 24H Security, Parking, Holiday Home, Investment, Luxury, Resale